

八八水災重建工作簡報

World vision of Taiwan

Typhoon Morakot Rehabilitation Program

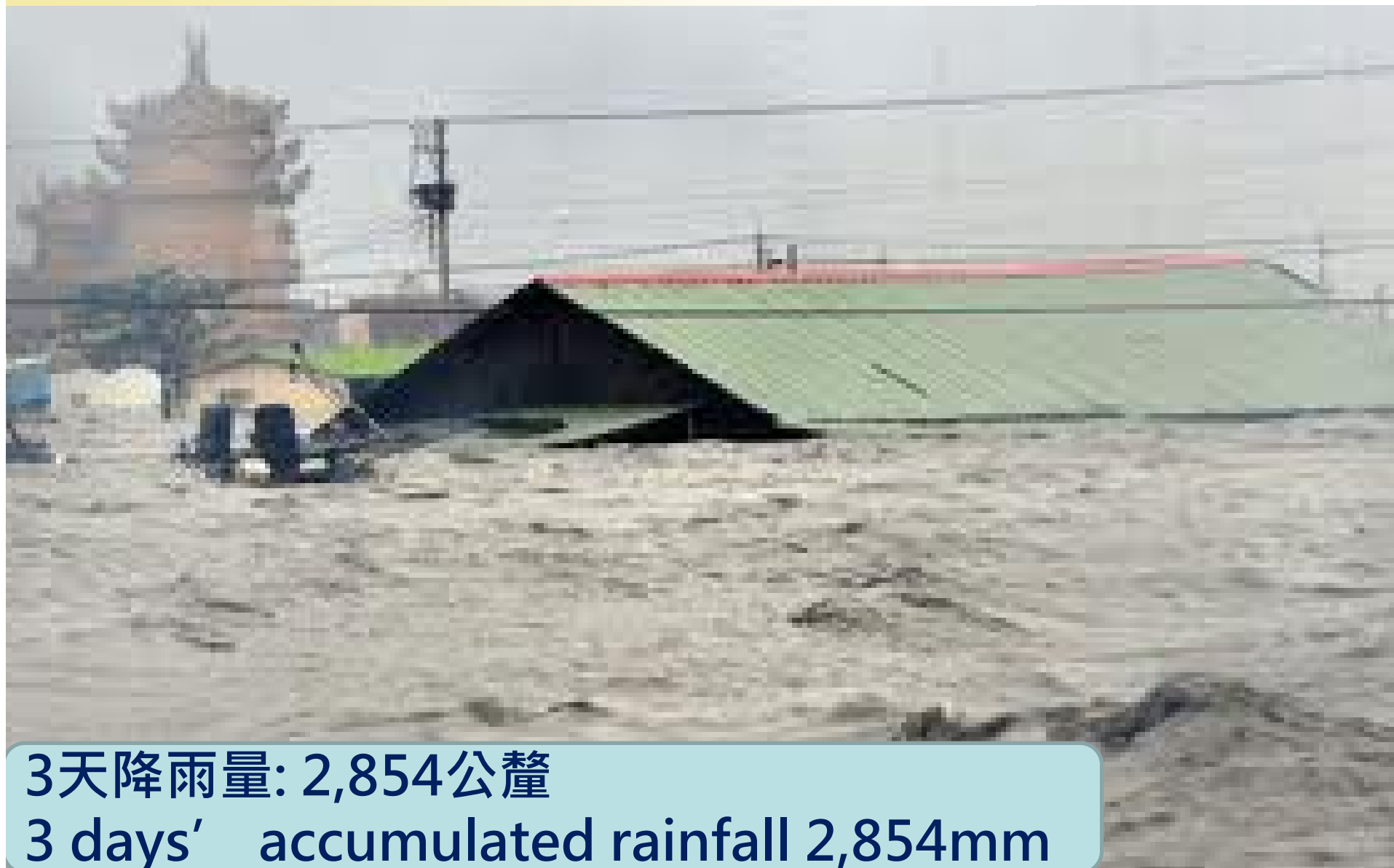
Torbors Chyuan & Joy Fan
Typhoon Morakot Rehabilitation Program

Oct 28, 2014



莫拉克風災

Damage of Typhoon Morakot



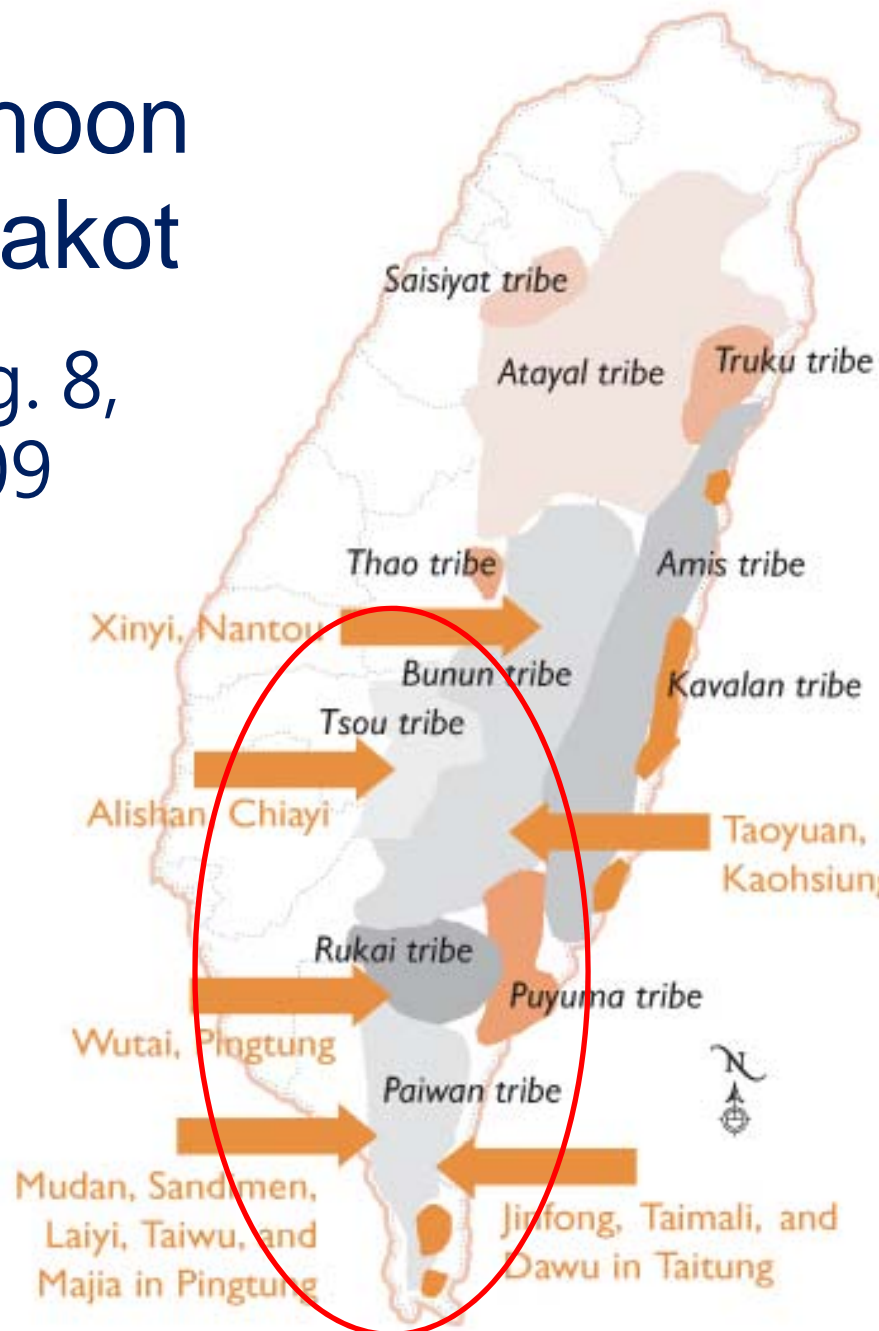
3天降雨量: 2,854公釐

3 days' accumulated rainfall 2,854mm

Typhoon Morakot

Aug. 8,
2009

World Vision
台灣世界展望會



Government declared disaster area:

1. 11 counties, 50% of total land area
2. 9.16 M people, 40% of Taiwan population

70% is
Indigenous
(Tribal)

莫拉克風災

Damage of Typhoon Morakot



災損估計 Total damage loss : NT\$199.8b (1.6% GDP, UD\$6.24B)



蘋果日報

莫拉克風災

Damage of Typhoon Morakot



受災影響人數 People affected by disaster : 510,668



莫拉克風災 Damage of Typhoon Morakot

Death toll about 500 people

Shiao Lin village, Taiwan, drastic changes after typhoon Morakot.

Before



After

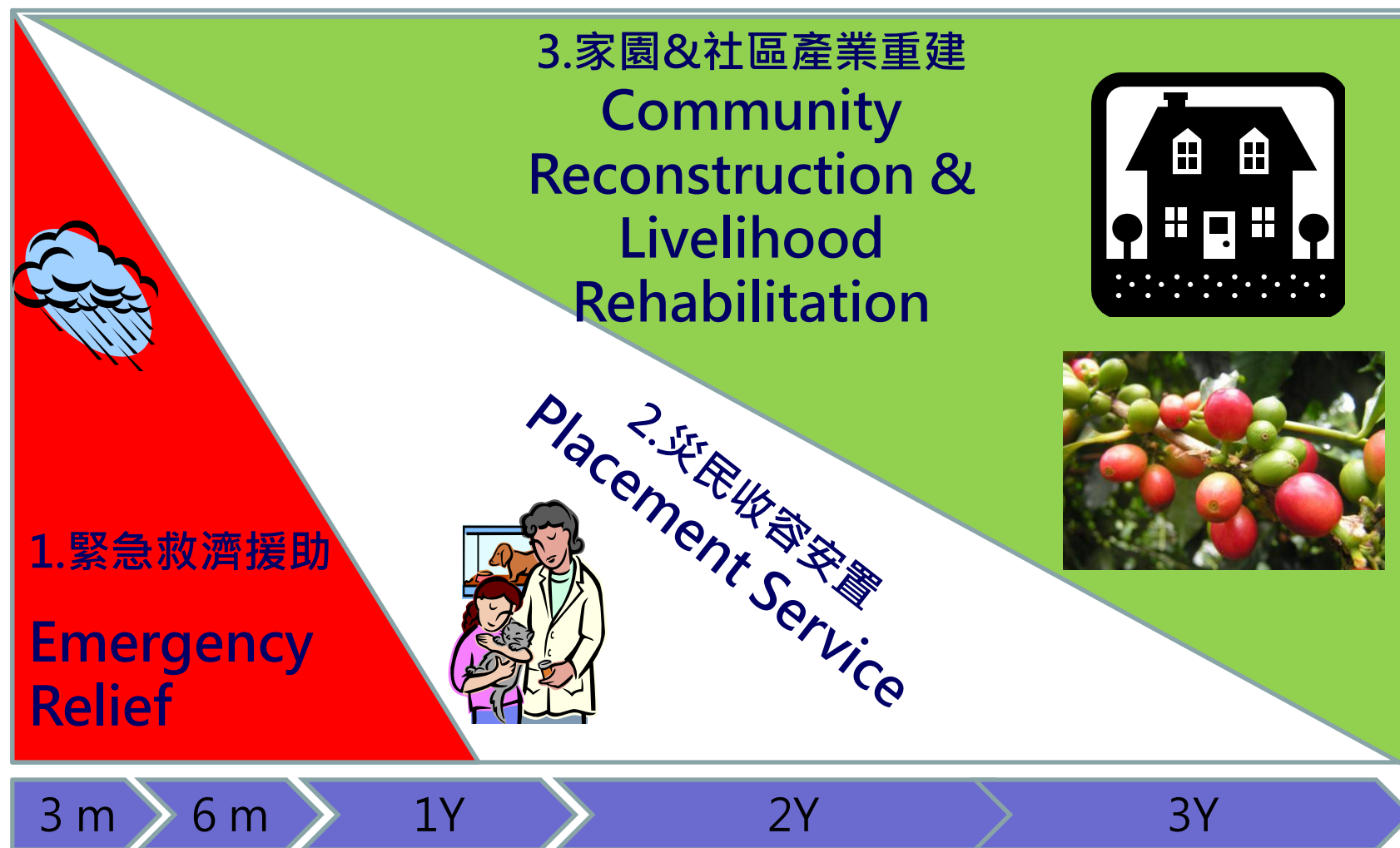


災難回應三階段

Three Phases for Disaster Response

大型災難在救援及重建過程大多可分成三大階段 Three Phases in Disaster Response(Priority)

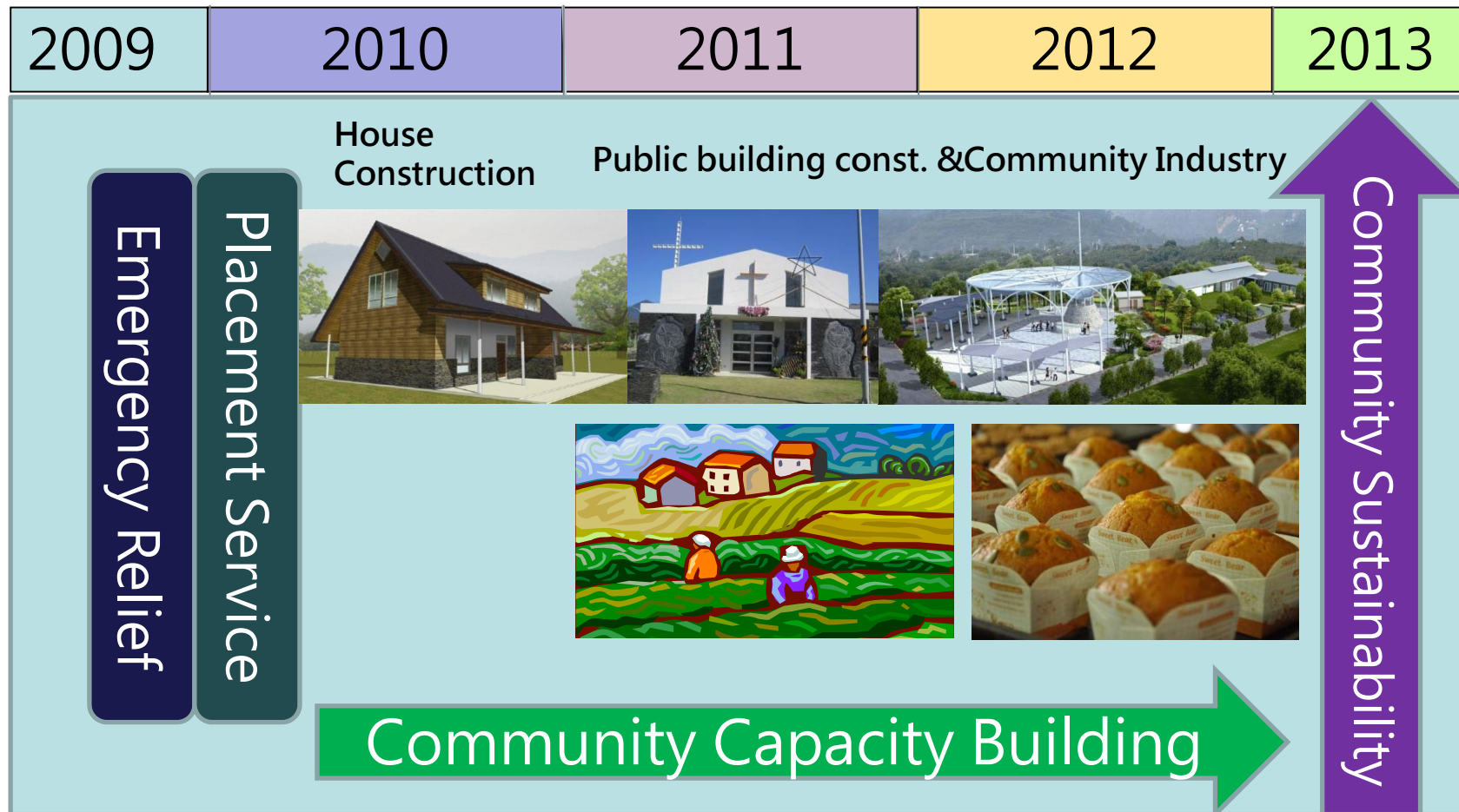
World Vision
台灣世界展望會



Reference: WVI HEA Disaster Management Standards (2011)

八八水災重建工作之順序與藍圖

Worldvision Taiwan take respond for Typhoon Morakot Rehabilitation Program



第一階段：緊急救援

Phase I : Emergency Relief

Aug.8th -28th .2009

I. 緊急救援

I. Emergency Relief



Food & Non-food items distribution

Around 60,000 relief kits were distributed to over 5,000 people



WVT provided services to about 9,000 people in 46 shelters.

NFI--Shelter Box Distribution



有隔間的帳篷，提供個人隱私。
Tents with compartments,
providing privacy.



Child Friendly Space in 10 locations



Drawing Class



Game therapy- making phone calls

The number of children' s participation about 4,500.

第二階段：安置服務

Phase II : Placement Service

Sep. 2009-Dec.2010

Social Services in Military Camps as villagers' shelter (Aug. 09-Dec. 10)

County	Shelters	People Served	Social Workers
Kaohsiung	Ren-mei	388	12
Kaohsiung	Yen-Tsao	437	12
Pingtung	Lungqun	430	2-3
Pingtung	Central radio station	131	1-2
Pingtung	Ren-Ming	95	by call
Pingtung	I-Liao	150	by call
Jaiyi	Chung-Chun	50	by call
Total		1,681	27-29

Remarks: villagers moved out camps in different time frame



Group meeting for stress relief



Art therapy



Social worker visited sick villager

第三階段：家園與社區產業重建

Phase III :

**House &Community Reconstruction
and Livelihood Rehabilitation**

Nov.2009-Aug.2013(4 years)

Major House Reconstruction sites



1.	Houses been completed	846
2.	Houses on construction	42
3.	Public buildings	36

Public buildings include 10 churches, 5 temp. classrooms, 1 student dormitory, youth clubs, tribe activity centers, children recreational center, village offices and meeting rooms, etc.

★ Major house reconstruction sites:

1. Pingtung county: 3 sites
2. Taitung county: 8 sites
3. Kaohsiung county: 2 sites
4. Jai-yi county: 1 site

以禮納里部落為例

Rinari Community as an example.
It is the biggest project of WVT
rehabilitation program

Sep.2009-Aug.2013

屏東禮納里部落

Rinari Community Location



屏東禮納里部落
Rinari
Community

禮納里部落 - 3村、2族
Rinari – 3 villages, 2 tribes

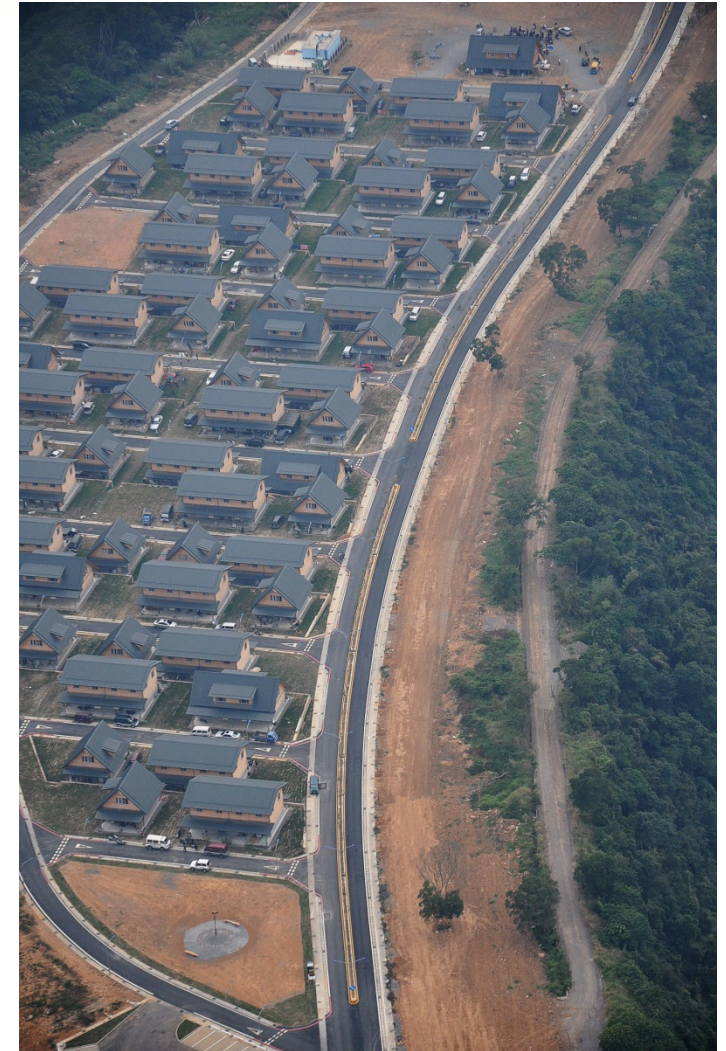
Rinari – 3 villages, 2 tribes



Sept.9th 2009



Dec, 20th 2010 house accomplished



Mar.2th 2013



永續社區營造整體考量因素

Key Factors for Community Reconstruction



禮納里部落營建工程的挑戰 Construction Challenges in Rinari



World Vision
台灣世界展望會



南北向高差105公尺，東西向高差40-50公尺，雙斜面地型構造，施工困難度高

Dual slope geological structure: with an altitude difference of 105 meters in north-south direction, 40-50 meters in east-west direction.

禮納里部落營建工程的挑戰 Construction Challenges in Rinari



全長4,300公尺的擋土牆 Retaining walls 4,300 meters in total

禮納里部落營建工程的挑戰 Construction Challenges in Rinari

Multiple Constructions



Drainage 排水



Telecom facility 電信



Wastewater treatment 污



Electricity 電力

房屋設計特色

The distinguished features of the
houses

大社村居民表達其對房屋及社區的想像

Villagers Presented
their ideas in house
and community
design



當地有名的
藝術家

Famous
artist in the
village



三種設計供居民選擇

Three designs for selection

Model 801



Model 802



Model 803



- 801: 獨棟
- 802: 雙併，斜屋頂
- 803: 雙併，稍不斜屋頂
(依據排灣族居民的期待)

房屋設計特色

House Distinguished Features



輕鋼構: 防震、對環境威脅小

Lightweight Steel: earthquake resistance, less threats to environment

施工簡單、快速、成本低、施工期短 (房屋6個月即可完工)

Simple, fast, cost & time efficiency (houses construction can be done in 6 months)

節能、減碳: 與RC相比, 減少40噸碳排放量/房

Energy saving, carbon reduction: comparing w. RC, each house reduces 40 tons of CO2.



社區配置特色

Community Distinguished Features



各部落以公共空間及綠地區隔，維持各部落空間整體性
Villages are separated by public and green areas to keep village space as a whole.



社區配置特色

Community Distinguished Features



施工中的禮納里永久屋

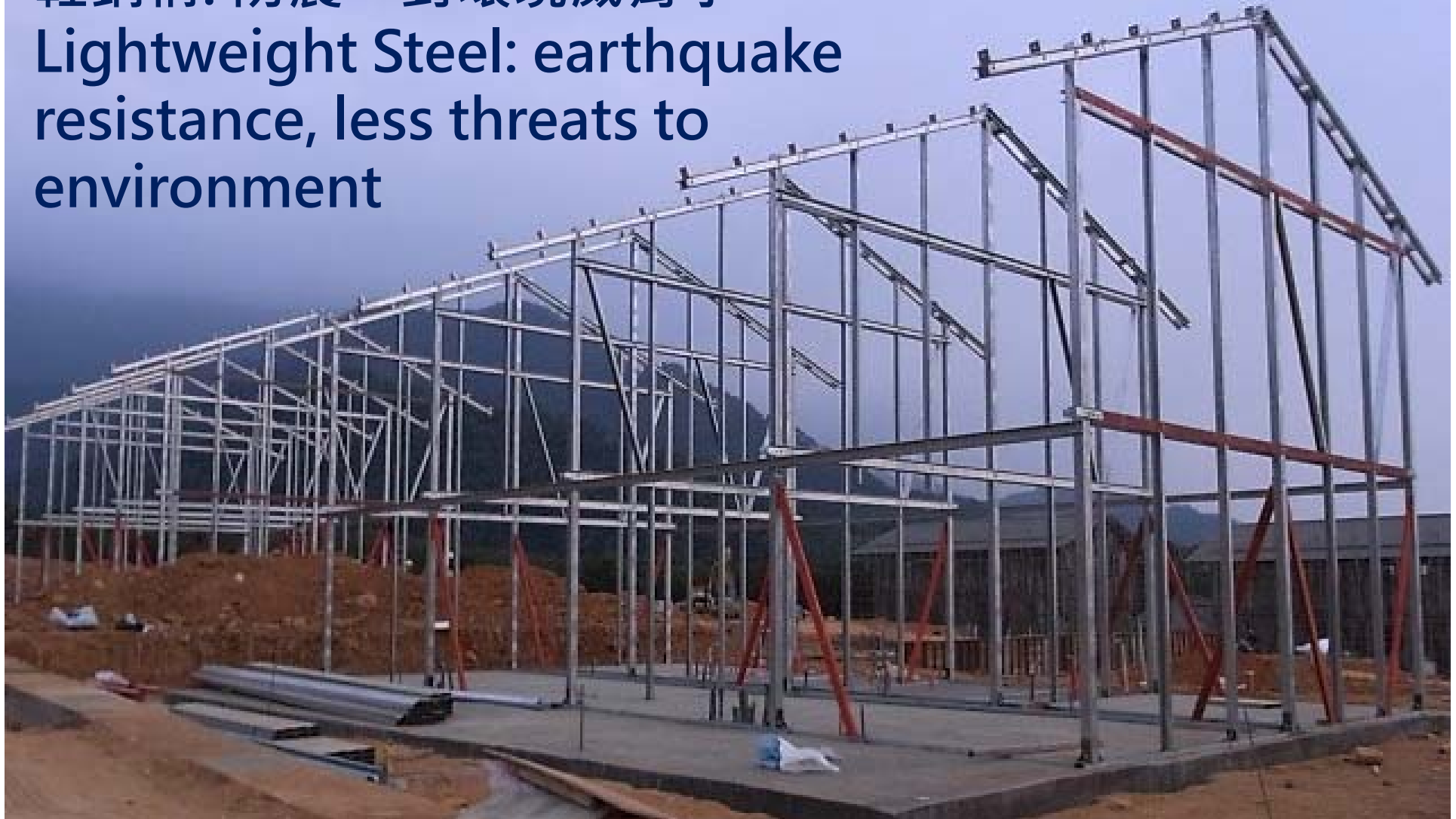
Houses on construction process
in Rinari

房屋設計特色

House Distinguished Features

輕鋼構: 防震、對環境威脅小

Lightweight Steel: earthquake resistance, less threats to environment



房屋設計特色

House Distinguished Features



節能、減碳: 與RC相比, 減少40噸碳排放量/房
Energy saving, carbon reduction: comparing
w. RC, each house reduces 40 tons of CO₂.



房屋設計特色

House Distinguished Features



施工簡單、快速、成本低、施工期短
Simple, fast, cost & time efficiency



公共設施完成後，6個月的時間即可交屋
Houses can be completed in 6 months

社區配置特色

Community Distinguished Features



每村皆有一滯洪池設計，
避免大雨將社區土石沖
刷至山下。

Each village has one
retention pond,
which will prevent
the soils be flushed
into the town under
the hill by the heavy
rain.

施工中的大社村永久屋 Houses on Construction



施工中的永久屋

House on Construction

鋼構架組立
Lightweight steel installation



施工中的永久屋 House on Construction



牆面工程 Construction on Wall

施工中的大社村永久屋

House on Construction



大社村剛完工街景

Nov. 2010 Houses were just completed

World Vision

台灣世界展望會



入住典禮 Dec,25th 2010 Welcome Home Ceremony



馬總統蒞臨禮納里部落入住典禮

The elected President also attended the welcome home ceremony



入住典禮 Dec.25th 2010 Welcome Home Ceremony

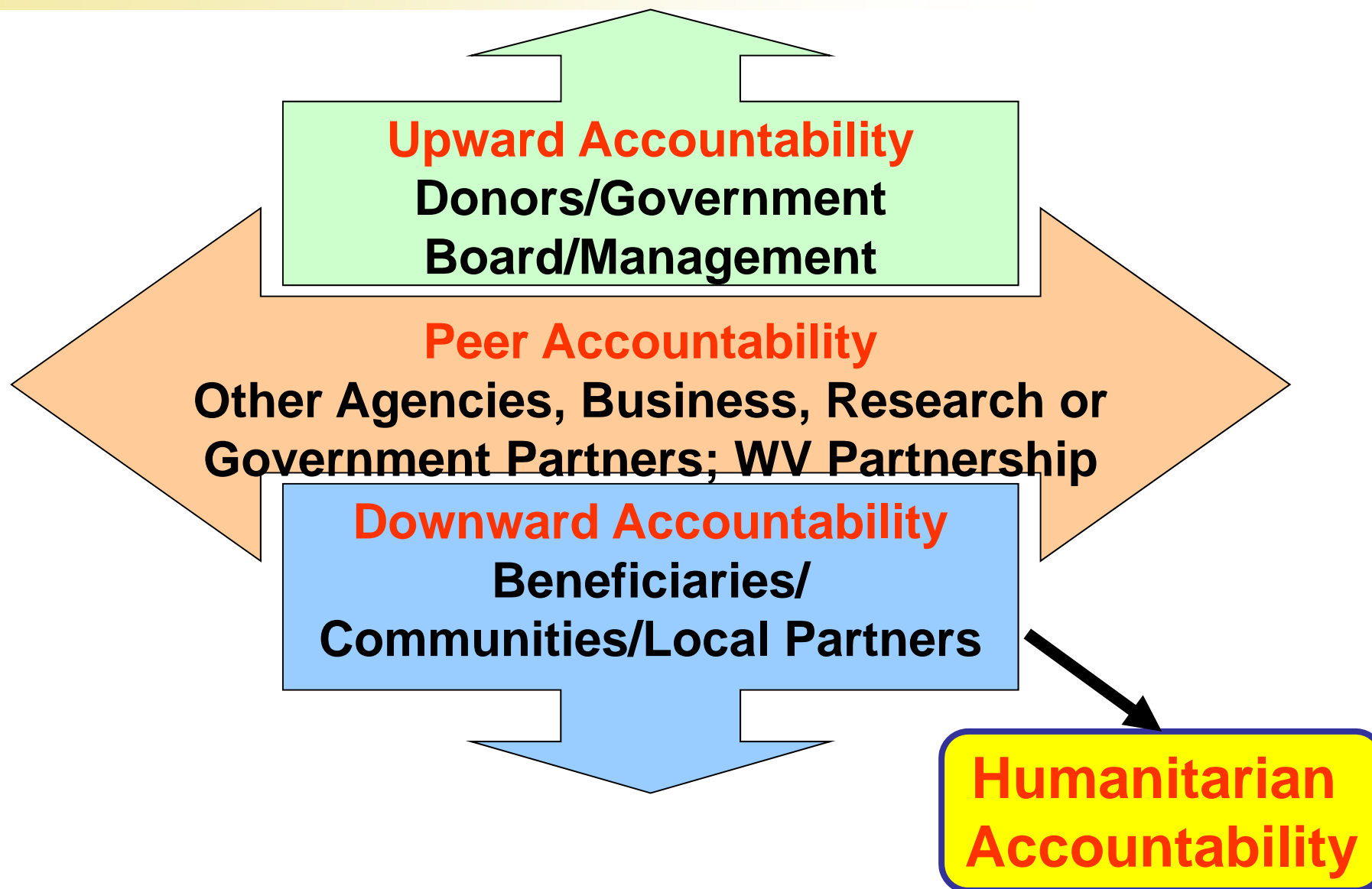
World Vision
台灣世界展望會



社區重建與世界展望會人道救援架構

Community Reconstruction in
World Vision Accountability
Framework

Dimensions of Accountability



展望會的人道責信

WV Humanitarian Accountability



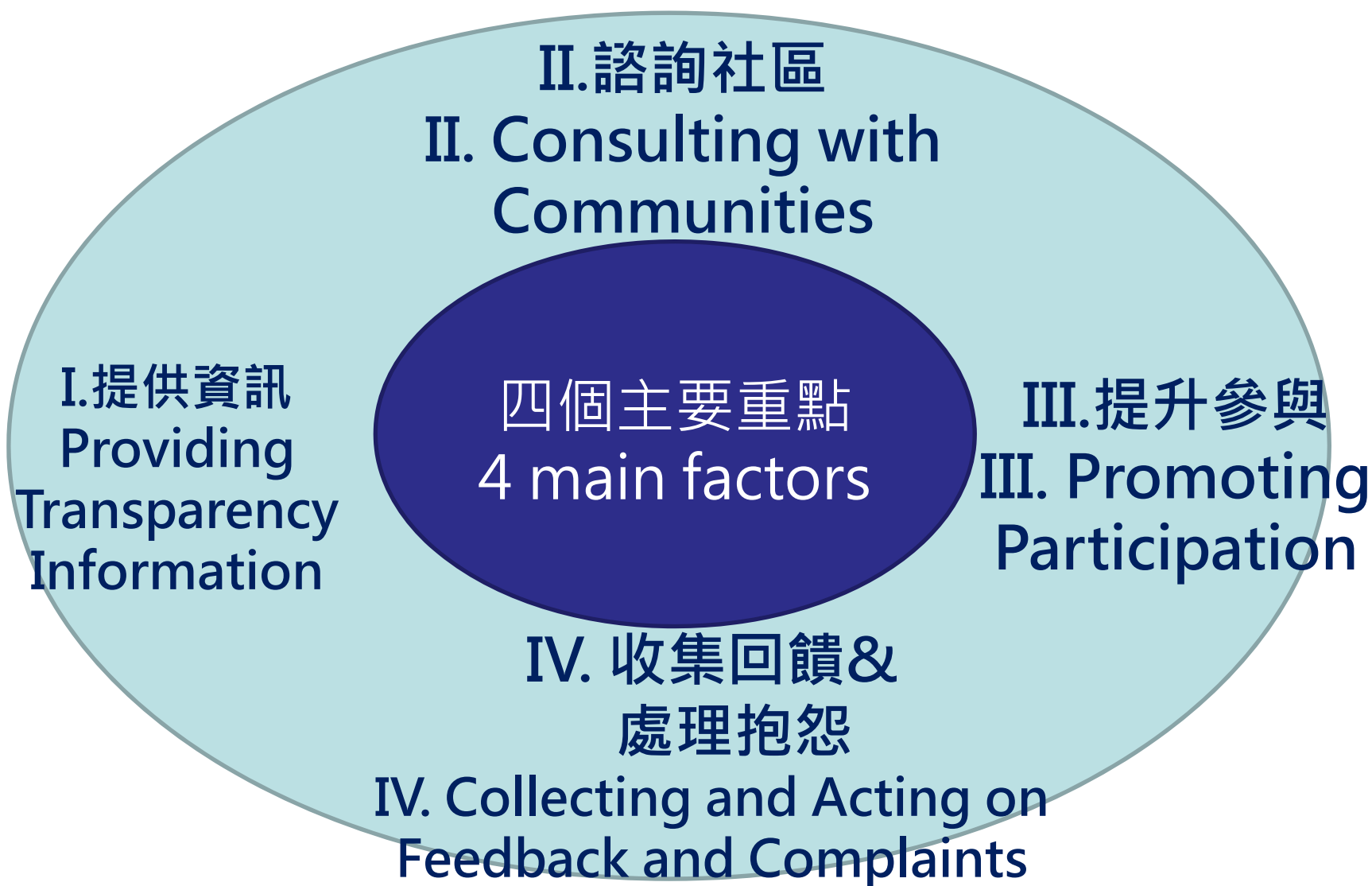
它指的是作為一個人道機構，我們要對我們幫助的人們負責--受益的社區。對於我們的計畫，即便是抱怨，受益人都有權利去表達他們的想法。

It means that as a humanitarian agency we are **responsible** and **accountable** to the people to which our work is directed – beneficiary communities. **Beneficiaries have rights. They should be able to voice their opinions, concerns and even complaints about our projects.**



展望會人道救援責任架構

WV Humanitarian Accountability Framework



I. 提供資訊

I. Providing Information

World Vision
台灣世界展望會



I. 提供資訊

I. Providing Information

台灣世界展望會向居民說明我們的重建計畫(2009)

WVT management explained our reconstruction and rehabilitation program to villagers in placement center, 2009.



I. 提供資訊

I. Providing Information



WVT人員向居民說明緊急救助計畫(2009)

WVT staff explained emergency aid plan to villagers, 2009

II. 諮詢社區

II. Consulting w/ Community



II. 諮詢社區

II. Consulting w/ Community

與會部落領袖、詢問他們意見

Meeting with tribe leaders for consulting their opinions or suggestions.



II. 諮詢社區

II. Consulting w/ Community

居民呈現他們對社區設計的想法

Villagers Presented their ideas in community design



當地有名的藝術家

Famous artist in the village

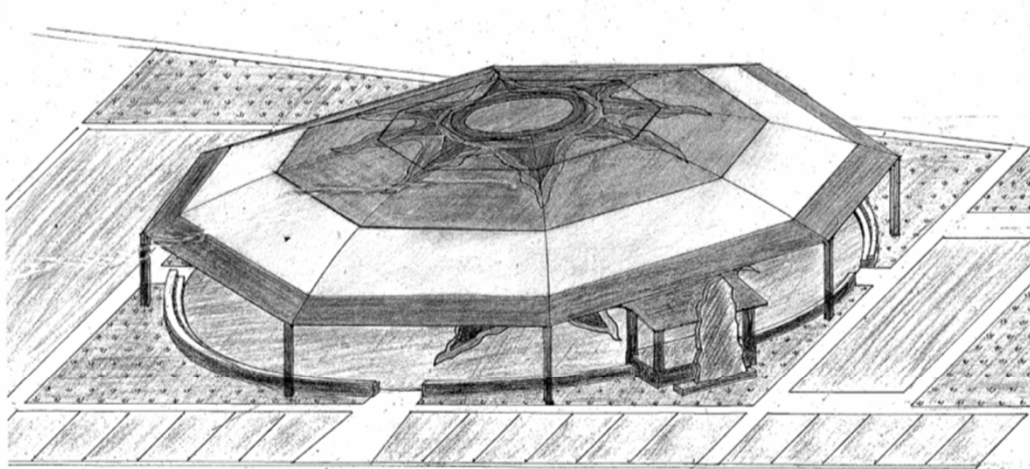


II. 諮詢社區

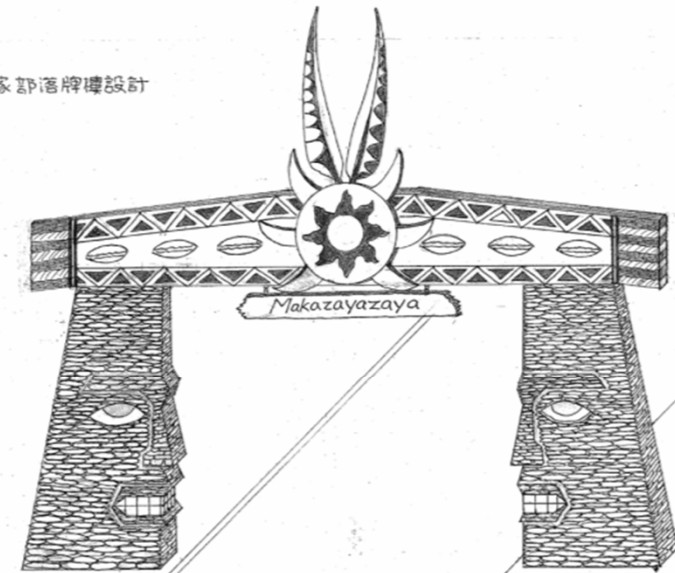
II. Consulting w/ Community

World Vision

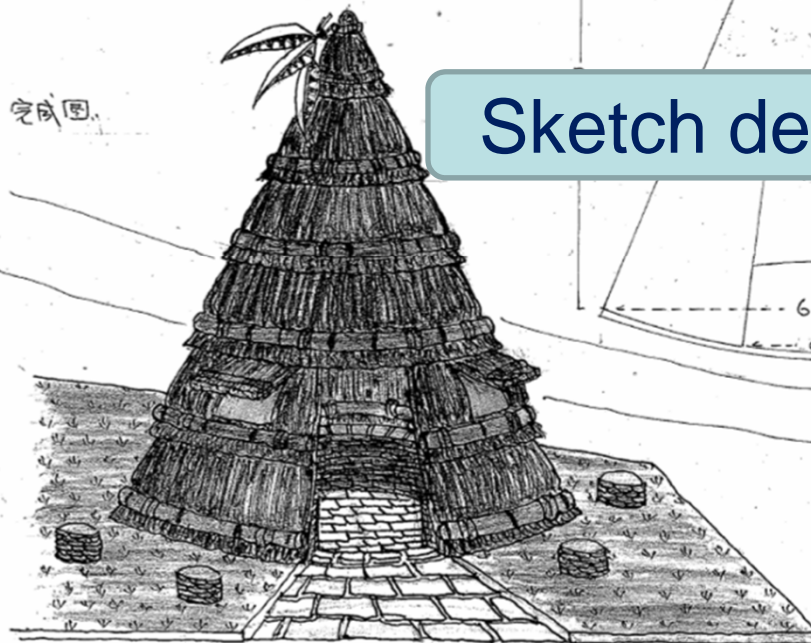
台灣世界展望會



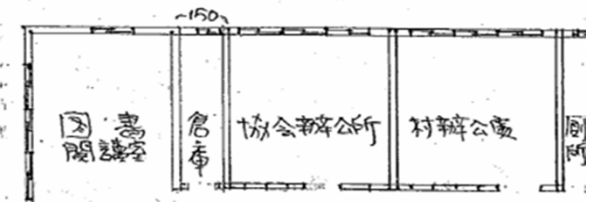
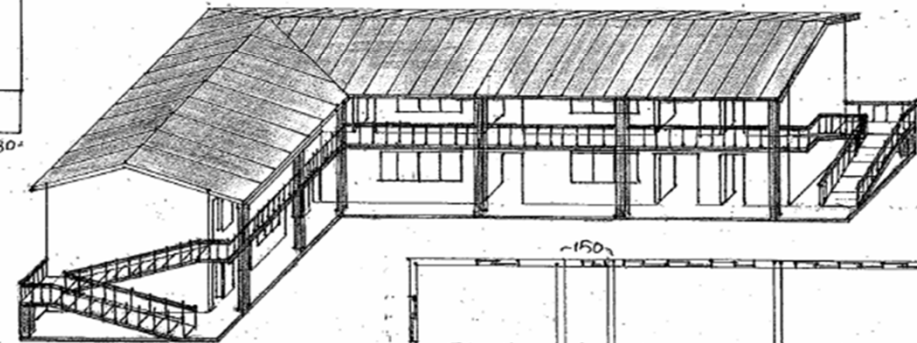
瑪家部落牌樓設計



(一) 完成圖



Sketch design provided by community



III. 提升參與

III. Promoting Participation



III. 提升參與

III. Promoting Participation

Stone slates are the distinguished feature of the Paiwan tribe



Villagers brought their stone slates from hometown



III. 提升參與

III. Promoting Participation



馬總統參訪禮納里部落與八八臨工合影

President Ma and the workers of a cash-for-work scheme

IV. 收集回饋並處理抱怨

IV. Collecting and acting on feedbacks and complaints

World Vision
台灣世界展望會



IV. 收集回饋並處理抱怨

IV. Collecting and acting on feedbacks and complaints



透過正式的部落會議收集回饋並處理抱怨 – 三村策略聯盟會議

IV. 收集回饋並處理抱怨

IV. Collecting and acting on feedbacks and complaints

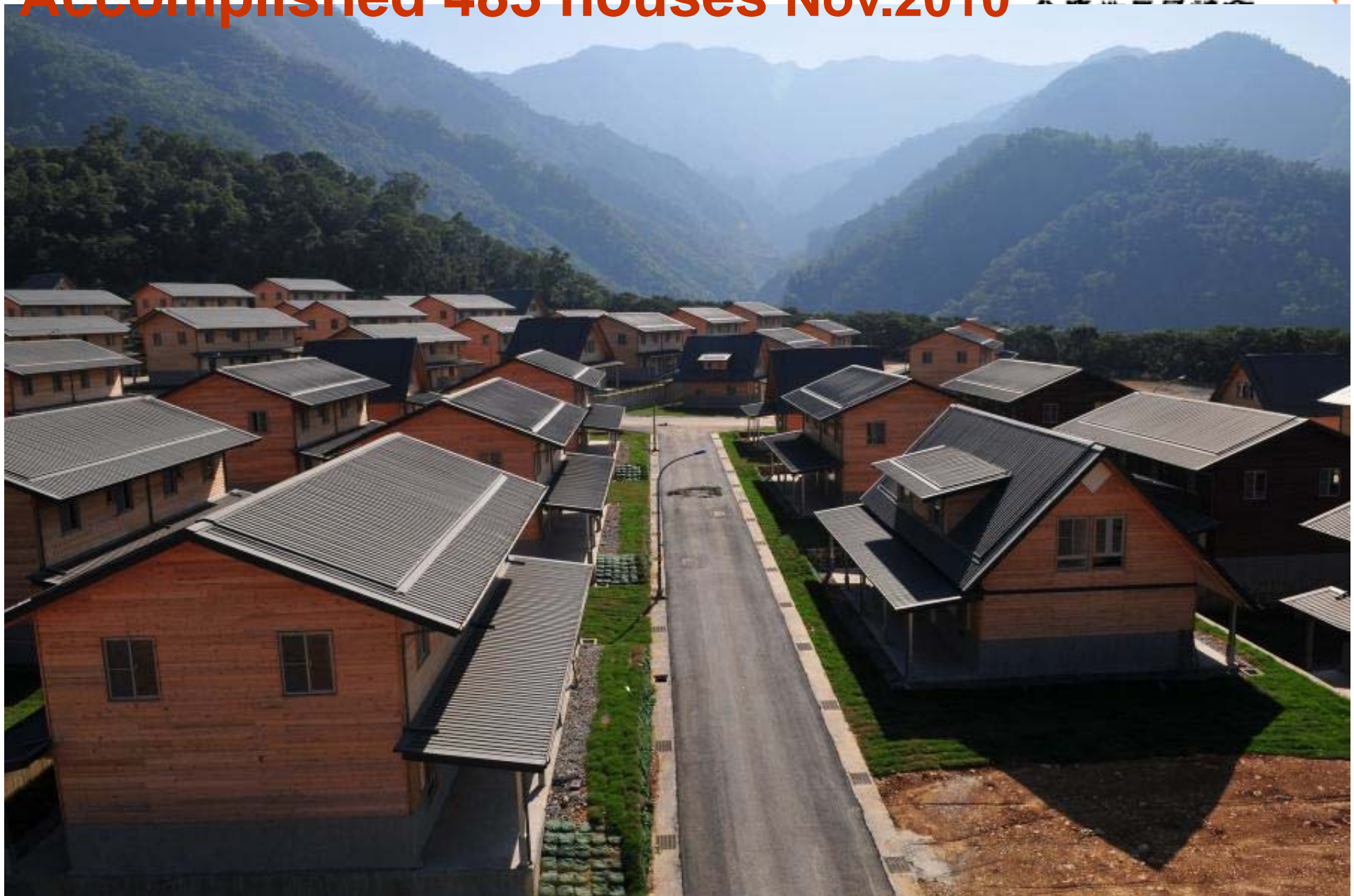
Rinari
Office



3 construction managers,
1 social work supervisors

Rinari Community

Accomplished 483 houses Nov.2010



Rinari Community

After villagers moved in



居民生活文化的重建

Life and Culture Rehabilitation

禮納里的教堂 Churches in Rinari





Rinari – Catholic Church in Haocha village



Rinari – Taiwan Presbyterian Church in Dashe village

Dashe Village Traditional culture rebuilding



Haocha village



Majai Village



社區產業發展
Community Livelihood
Development

社區產業

Community Livelihood Development

World Vision

台灣世界展望會



製作小米露 Making millet wine in vocational training class

社區產業

Community Livelihood Development



烘培班製作紅藜餅乾 Making red chenopodium cookies in bakery class

社區產業

Community Livelihood Development

World Vision

台灣世界展望會



烘培班製作南瓜瑪芬 Making pumpkin muffins in bakery class

社區產業 Community Livelihood Development



咖啡製作課程 Classes for how to make good coffee

社區組織培力 Community Capacity Building



禮納里部落居民代表定期舉行三村聯合會議，共同商討部落未來發展
Regular meetings are held in Rinari. Three villages' representatives discuss the future development of the community.

社工服務 Social Service

生活重建服務中心 Livelihood Rehabilitation Center



Employment service : 就業服務
Application of unemployment allowance, vocational training, employment referral

Livelihood service: 生活服務
Create employment opportunities, community industry development, disaster prevention and mitigation

Other referral services: 轉介服務
Legal, basic infrastructure building, community industry, community rebuilding, cultural activities, etc.



Making quilt training class



Disaster prevention class

生活重建服務中心 Livelihood Rehabilitation Center



Psychological service : 心理服務
Counseling, referral, and
psychosocial activities

Education service : 教育服務
Counseling, after-school tutorial,
tuition aid for disadvantaged
students .

Welfare service : 福利服務
Preventive, supportive, and
developmental services for
vulnerable groups



Teachers training for life education



Leadership training

園藝治療在禮納里 Gardening Therapy in Rinari



居民於禮納里種植傳統作物，撫慰想念舊部落的心

Villagers plant traditional vegetables and crops, which relieves their home sick

This rehabilitation program have phased out in Aug. 4th 2014









Thank You!

