



## ***Law & Regulation of Disaster Management in Indonesian***

1. GOVERNMENT LAW NO 24 YEAR 2007 CONCERNING  
***DISASTER MANAGEMENT***
2. GOVERNMENT REGULATION NO 21 YEAR 2008 CONCERNING  
***DISASTER MANAGEMENT IMPLEMENTATION***
3. GOVERNMENT REGULATION NO 22 YEAR 2008 CONCERNING  
***DISASTER RELIEF MANAGEMENT & FUNDING***
4. GOVERNMENT REGULATION NO 23 YEAR 2008 CONCERNING  
***INTERNATIONAL ORGANIZATION & NGO'S RULES  
IN DISASTER MANAGEMENT***
5. PRESIDENTIAL REGULATION NO 8 YEAR 2008 CONCERNING  
***NATIONAL DISASTER MANAGEMENT AGENCY***



# **DISASTER MANAGEMENT IMPLEMENTATION**

**(BASE ON GOVERNMENT REGULATION  
Number: 21 Year 2008 Concerning Disaster Management)**

*Implementation of Disaster Management*

1. PRE DISASTER

2. EMERGENCY

3. POST DISASTER

### CONDITION OF NO DISASTER

#### Planning of Disaster Management

- Part of development planning
- BNPB for national scale, BPBD Province for province scale, BPBD Regional for regional scale

#### prevention

- to decrease the risks of disaster
- Responsibilities of government and community

#### Decreasing the risk

- Arrangement of disaster risk planning action decrease (national and local)

#### training

#### exercise

- Improving community awareness, abilities and responses in facing the disaster through the basic training, technical, and simulation

#### research

- High risk activities potential for the disaster

#### Spatial planning

- Implementation and enforcement spatial plan
- regularly, implement the monitoring & evaluation planning, implementation of spatial planning, and safety standard

# DISASTER MANAGEMENT IMPLEMENTATION

## *PRE DISASTER*

### CONDITION OF DISASTER POTENTIAL

#### mitigation

- Planning and implementation spatial plan
- Arrangement of development
- Training and exercise

#### Early warning

- Monitoring sign of hazard
- Analyzing data
- Decision making
- Inform the decision
- Action by community

#### preparedness

- BNPB & BPBD build logistic and facilitation management system
- organizing, instalation, and trial early warning system
- organizing, training, and exercise about emergency response mechanism
- Prepare the evacuation area
- Acurate data arangement, information, and renewal SOP of disaster emergency response
- Prepare and provide material, equipment, and facilitation for the facilitation recovery

## DISASTER MANAGEMENT IMPLEMENTATION

# ***EMERGENCY RESPONSE***

**Controlled by  
Head of BNPB/BPBD, according to his authority**

**includes as follows:**

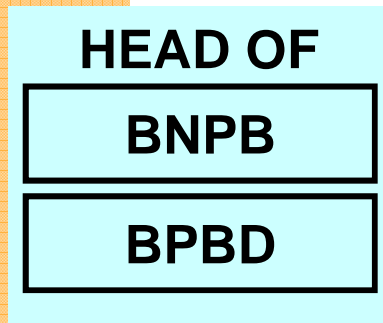
- a. Rapid Assessment about location, damage and resource of the response;
- b. Decided of the emergency situation status;
- c. Rescue and Evacuation of the victims;
- d. Fulfillment of the basic needs;
- e. Protection to the vulnerable groups (pregnant women, children, the old, disability persons);
- f. Quick recovery to the vital facilities

# DISASTER MANAGEMENT IMPLEMENTATION

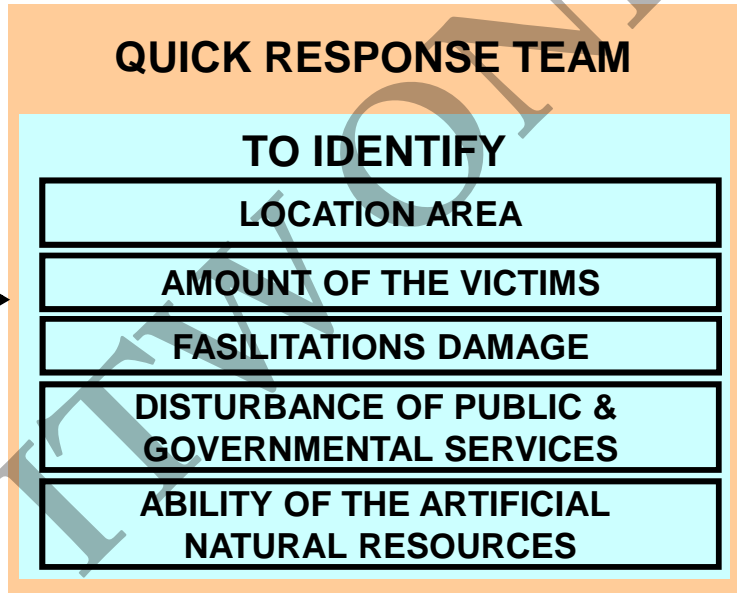
## EMERGENCY RESPONSES - Quick and Accurate Evaluation

### AIM

Determine accurate needs and actions



TASKING

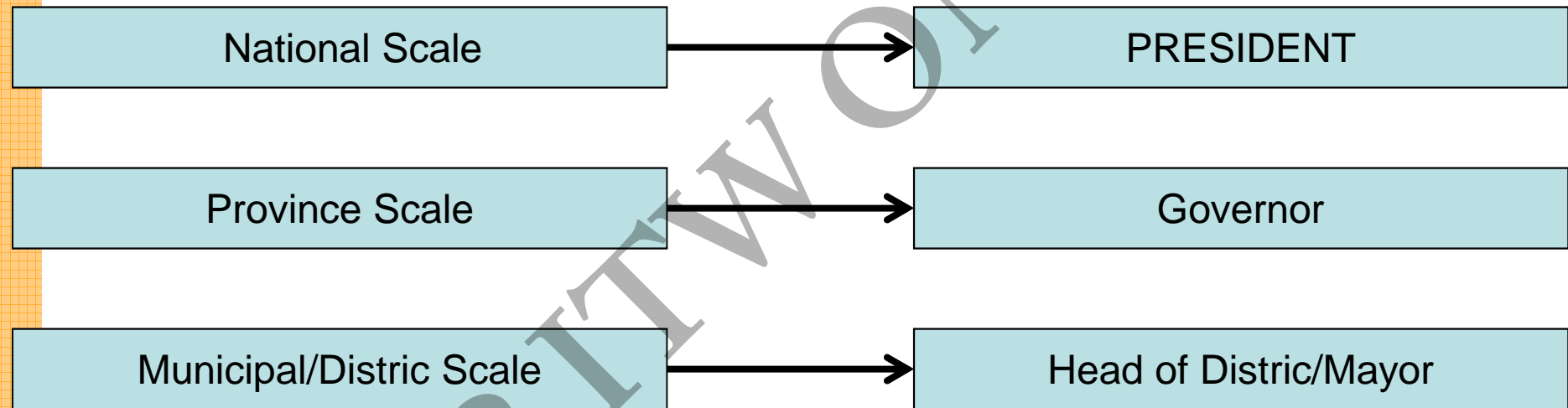


# DISASTER MANAGEMENT IMPLEMENTATION

## *EMERGENCY RESPONSES - Determination of the Status*

### Done by

Central or Local government, according to the disaster scale



When the status of Emergency Disaster is determined, BNPB or BPBD has special access

## DISASTER MANAGEMENT IMPLEMENTATION

### *EMERGENCY RESPONSES - Special Access*

**a. Human Resources Involvement**

**b. Mobilizing Equipment**

**c. Mobilizing Logistic**

**d. Immigration**

**e. Permits**

**f. Procurement of goods and services**

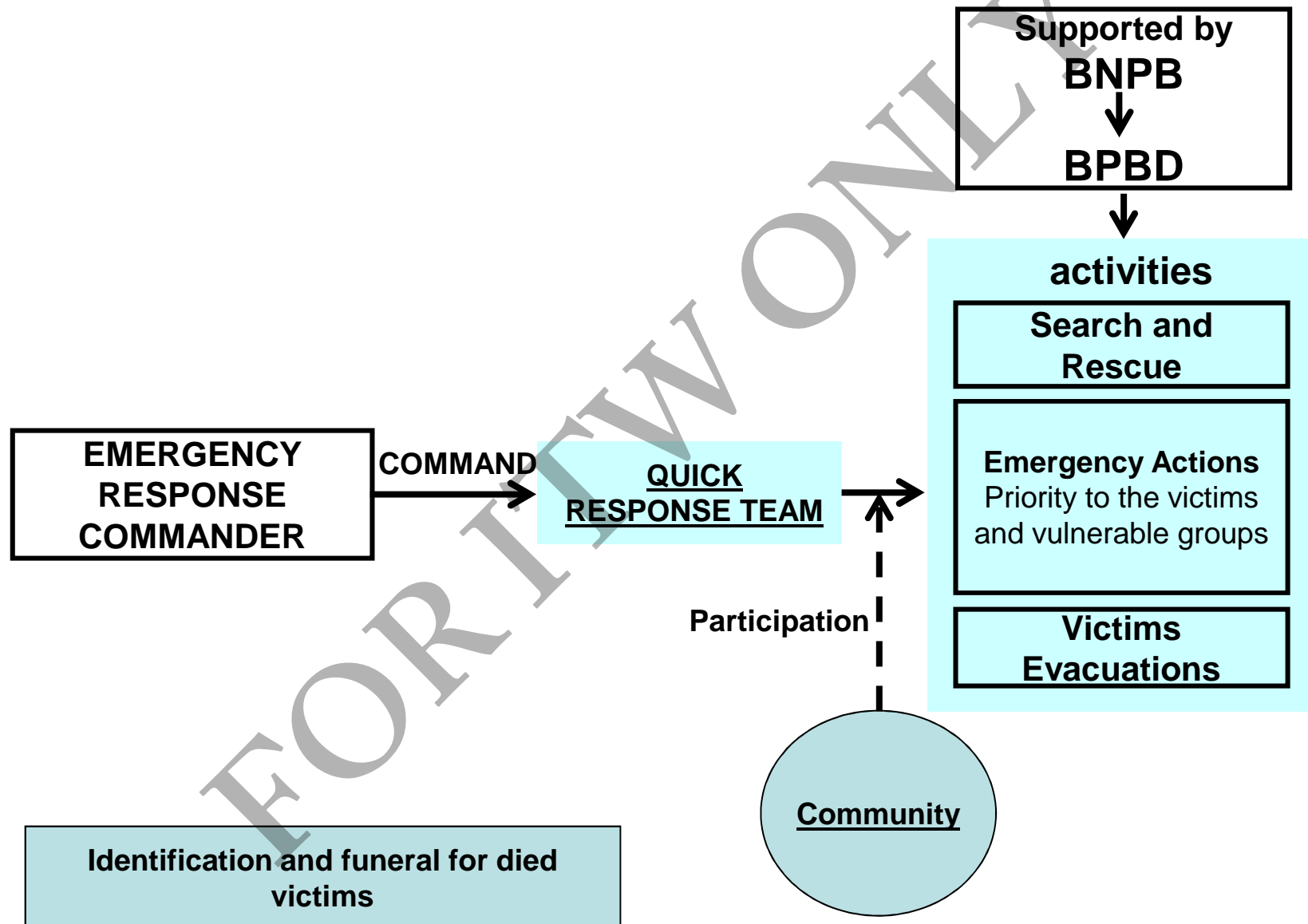
**g. Implementation and responsibilities of funding and goods**

**h. Rescue**

**i. Command to task related institution**

# DISASTER MANAGEMENT IMPLEMENTATION

## EMERGENCY RESPONSES - Rescue & Evacuation



# DISASTER MANAGEMENT IMPLEMENTATION

## ***EMERGENCY RESPONSES - Fulfillment of the basic needs***

Done by:  
Government, Local Government, Community, Bussines Institutions, International  
Institutions/Non Governmental Organizations



### WATER AND SANITATION



### FOOD AND CLOTHES



### SHELTER



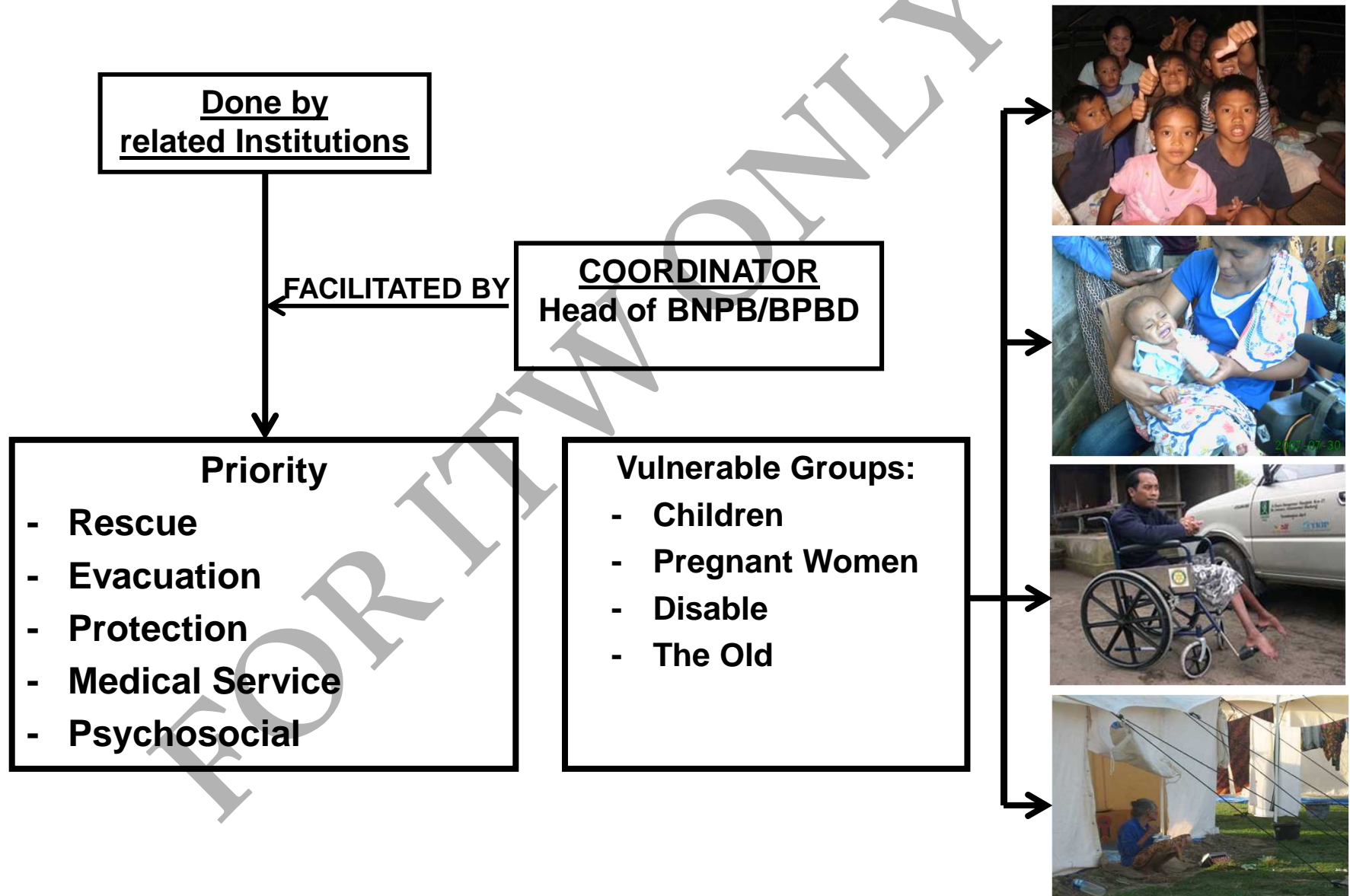
### PSHICOSOCIAL SERVICE



### MEDICAL SERVICES



**EMERGENCY RESPONSES - Protection of Vulnerable Groups**



### ***EMERGENCY RESPONSES - Early Recovery of the Vital Facilitations***



- (1) To recover the function of the vital facilities
- (2) Done by related institutions, with the coordination from Head of BNPB and/or Head of BPBD according to his authority.



## Regency Teluk Wondama Province Of West Papua

Type of Disaster	Flush Flood & Land Slide
Date of Disaster	October, 4 2010
Type of Material	Wood (simple construction)
Capacity Shelter	
Step 1 Build	<b>1124</b> House Hold
Step 2 Build	<b>516</b> House Hold

## Regency Mentawai Islands Province Of West Sumatera

Type of Disaster	Earthquake & Tsunami
Date of Disaster	October, 26 2010
Type of Material	Wood (simple construction)
Capacity Shelter	
Step 1 , North Pagai	<b>410</b> House Hold
Step 2 , South Pagai	<b>516</b> House Hold
Step 3, South Sipora	<b>450</b> House Hold

## Shelter Recapitulation

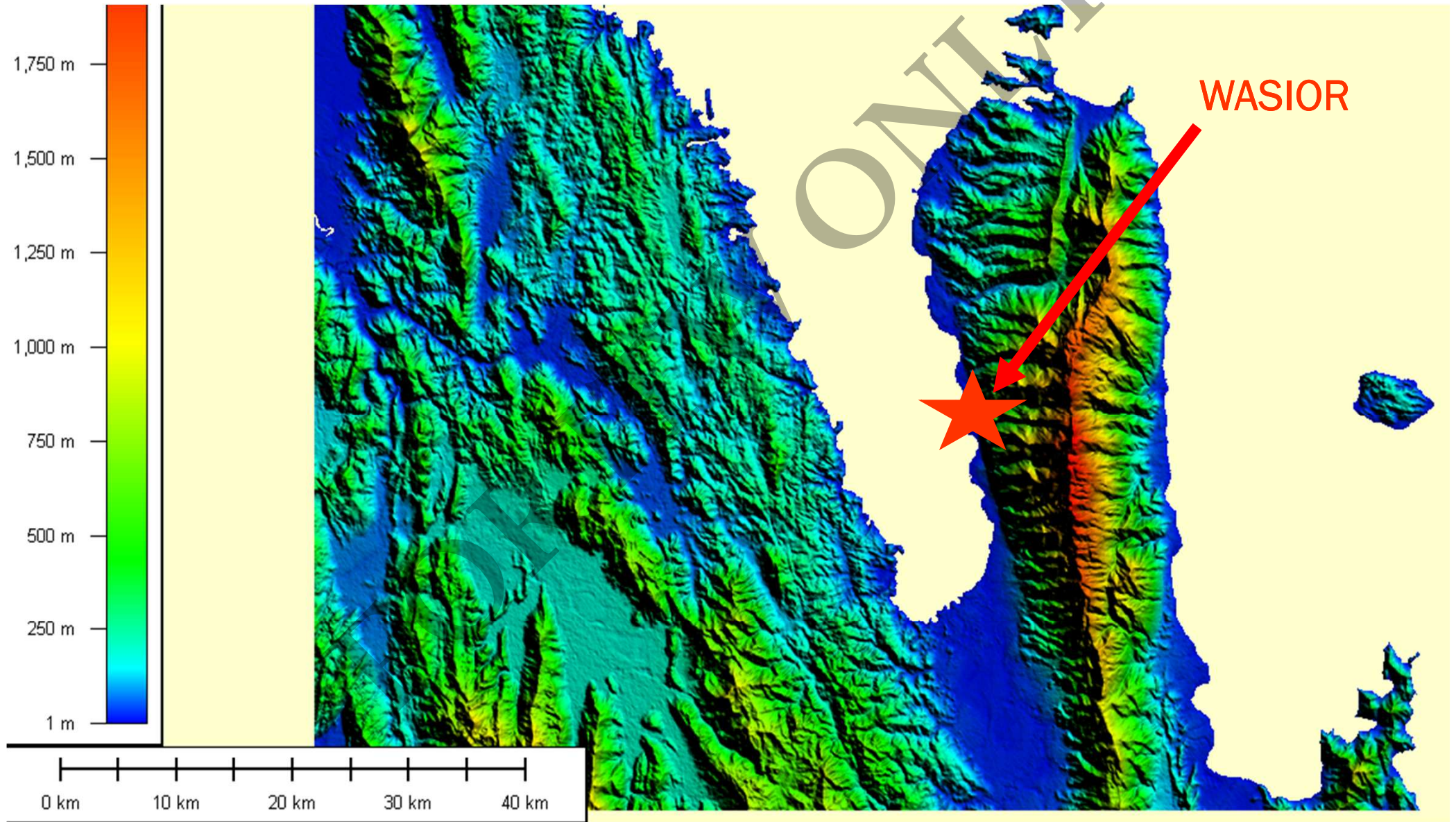
### Province Of Yogyakarta & Central Of Java

Type of Disaster	Eruption Mount Merapi
Date of Disaster	October, 26 2010
Type of Material	Bamboo, Wood (Simple Construction)
Capacity Shelter	
Province of Yogyakarta	
Regency Sleman	<b>2.613</b> House Hold
Province of Central Java	
Regency Boyolali	
Regency Klaten	
Regency Magelang	

# Regency Teluk Wondama

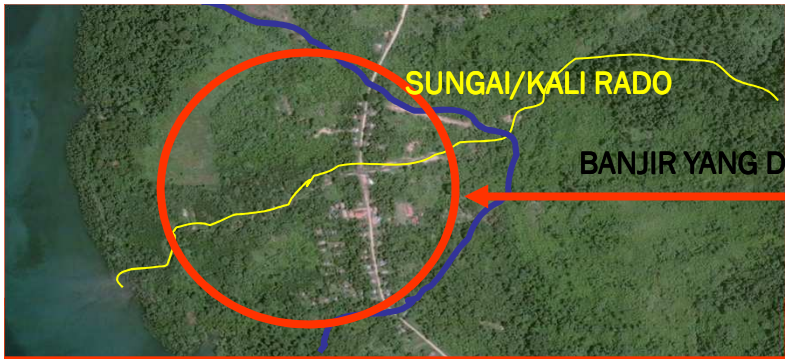


# Mapping Relief Teluk Wondama



**Lands slide  
WASIOR, 4 OKTOBER 2010**





**SUNGAI/KALI RADO**

**BANJIR YANG DISEBABKAN OLEH KALI/SUNGAI RADO**



**KAMPUNG RAKWA/RADO**



**SUNGAI/KALI SANDUAI**

**BANJIR YANG DISEBABKAN OLEH KALI/SUNGAI SANDUAI**



**KAMPUNG MORU**



**SUNGAI/KALI ANGGRIS**

**BANJIR YANG DISEBABKAN OLEH KALI/SUNGAI ANGGRIS**



**KELURAHAN WASIOR**



**SUNGAI/KALI MANGGURAI**

**BANJIR YANG DISEBABKAN OLEH KALI/SUNGAI MANGGURAI**



**KAMPUNG MANIWAK/MANGGURAI**

# DEMAGE FLUSH FLOODS WASIOR 4 OKTOBER 2010



# SEARCH, RESCUE AND EVACUATION



# DEMAGES & LOSSES, DISTRICT WASIOR 4 OKTOBER 2010



# MATERIALS STONE , SOILS AND FALLEN TREE



*Wasior Shelter (Flush Flood & Land Slide Disaster, 4 October 2010)*





**EVENTS** : Earthquake 7.2 SR and Tsunami

**TIME** : Monday, 25 Oktober 2010 pukul 21.42 WIB

**EPICENTRUM** : 78 Km South West. Pagai South - Mentawai

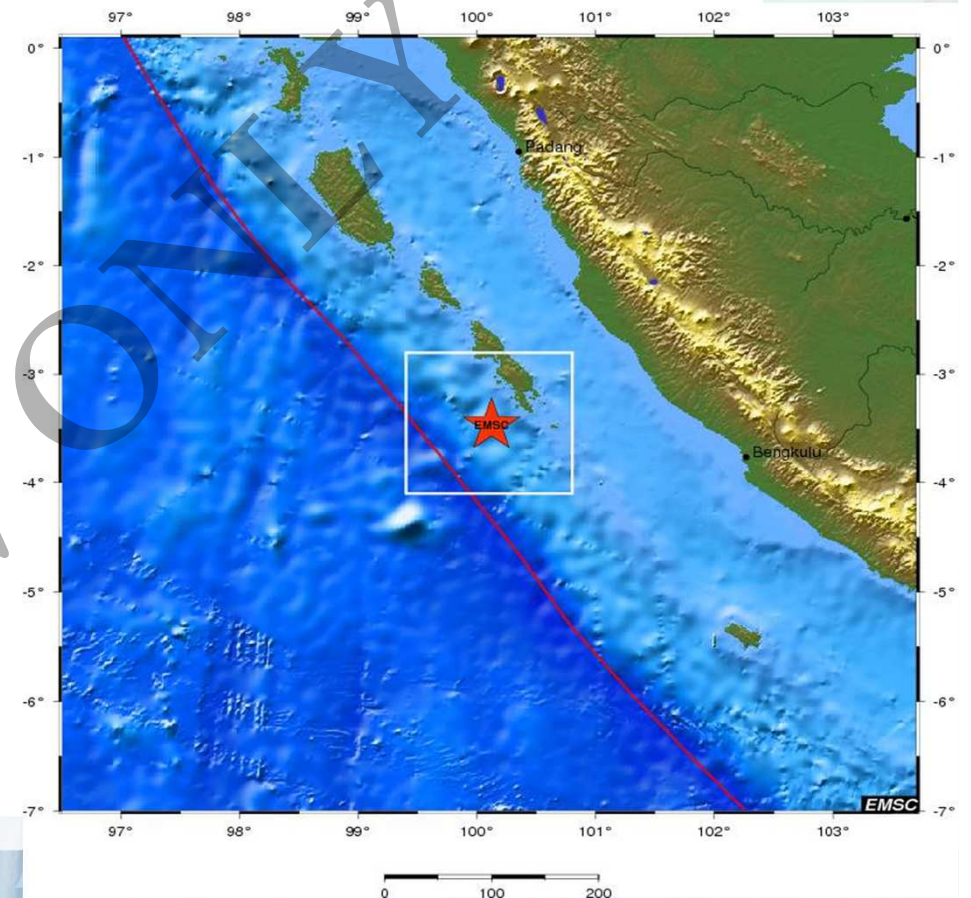
**DEPTH** : 10 Km

**POTENSI** : Tsunami (reach heights 12 m, distance 600 m)

**MMI** : VI-VII S, III - IV South Pagai, III - IV Pariaman, III Sungai Penuh, III Bengkulu, II Kepahiang, II - III Ketahun

**AFFTER SHOCKS** : 23 times (> 5.0 SR) s.d. 12 November 2010

## DISASTER EVENTS





NO	KECAMATAN	KORBAN JIWA					KERUSAKAN FASILITAS							
		MD	HLG	LB	LR	Ungsi	Rumah		Pddkn	Ibdh	Rmh Dns	Resort	Jbtn	Lain-Lain
							RB	RR						
1	Sipora Selatan	23	-	-	-	1,248	219	73	-	7	-	1	9	
2	Pagai Selatan	184	3	2	-	5,497	101	50	4	1	5	-	-	
3	Pagai Utara	292	18	2	-	2,133	335	177	3	5	2	1	3	1 Kapal Pesiar
4	Sikakap	10	-	1	-	2,554	17	-	-	-	-	-	-	
<b>TOTAL</b>		<b>509</b>	<b>21</b>	<b>5</b>	<b>-</b>	<b>11,432</b>	<b>672</b>	<b>300</b>	<b>7</b>	<b>13</b>	<b>7</b>	<b>2</b>	<b>12</b>	

Sumber : Pusdalops BNPB & BPBD Prov. Sumbar per 22 November 2010

# Establishment Process, Shelter in MENTAWAI ISLANDS (Earthquake & Tsunami disaster, 26 October 2010)



1. Land clearing shelter area



2. Mobilisation material



3. Stock Material Shelter



4. Erection Frame shelter



5. assembly roof and wall



6. finishing shelter

# ***NORTH PAGAI SHELTER – MENTAWAI ISLANDS***



***Shelter KM 1  
North PAGAI***



***Shelter KM 4  
North Pagai***



***Shelter KM 5.5  
North Pagai***



***Shelter KM 8  
North Pagai***



***Shelter KM 10  
North Pagai***

## ***South Pagai Shelter – Mentawai Islands***



**Palang  
Merah  
Indonesia**

Establish shelter in South Pagai execute by own power with the refuges.



Finished Shelter  
Indonesian Red Cross

# South Sipora Shelter – Mentawai Islands (Masokut Village – KM4)

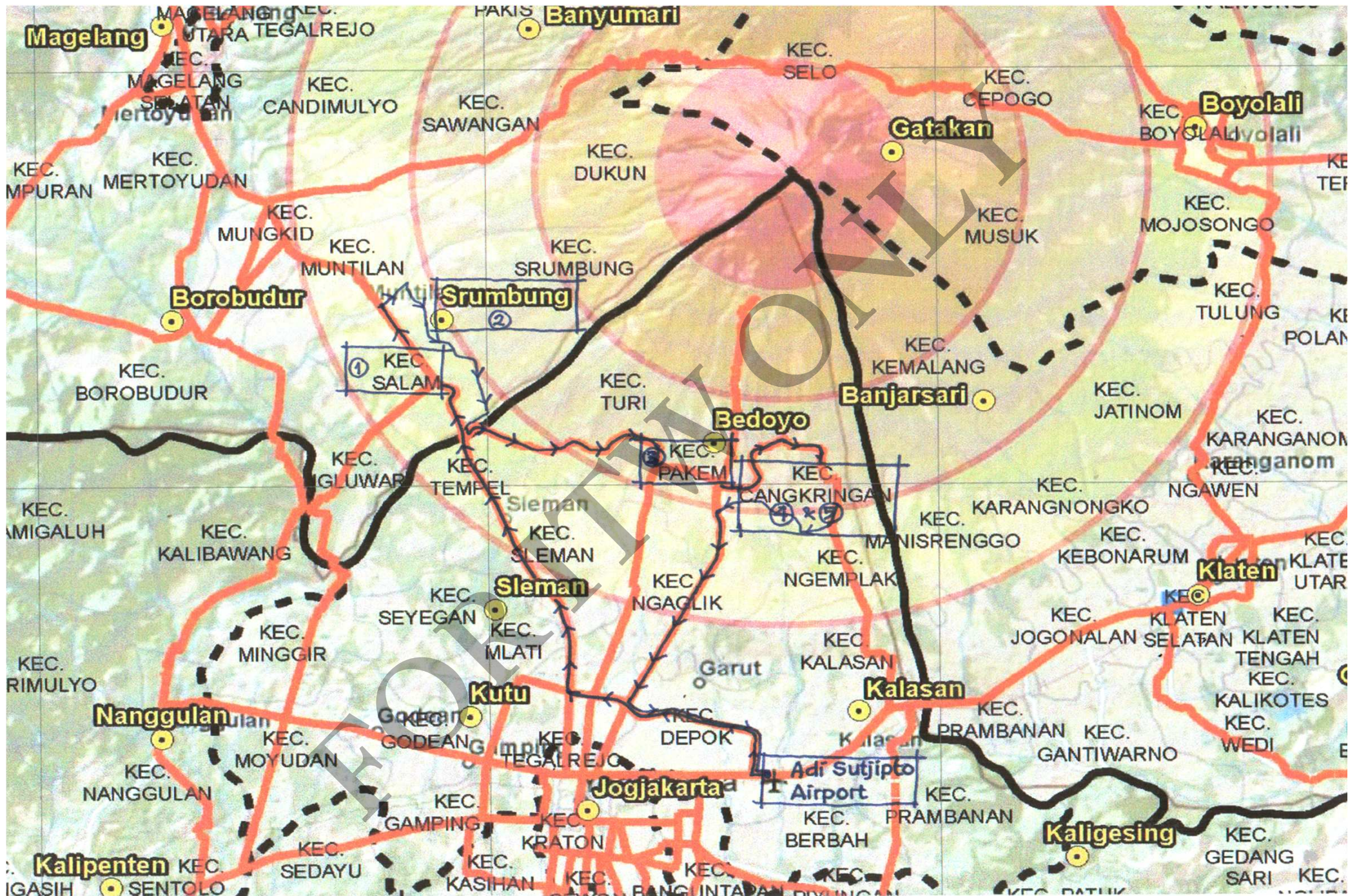


# Progress of construction of public facilities, D.I Yogyakarta Province as per 21 Januari 2011.

NO	Shelter Locations	Number of Shelter	Progress (Plan/Realization)					
			Water Facilities	Public Hall (Unit)	Praying Facilities (Unit)	School (Unit)	Livestock barn (unit)	Fish Pond (Unit)
1	Plosokerep	307	5 / 4	1 / 1	1 / 1	1 / 1	19/ 17	31 / 3
2	Gondang (4 Titik)	1.017	8 / 3	2 / 0	3 / 0	0 / 0	30 / 23	48/0
3	Banjarsari	546	5 / 4	----- already exists--			---there is limited land--	
4	Jetis Sumur	262	-- look for possibility of another location---					
5	Dongkelsari	194	3 / 0	1 / 0	1 / 0	1 / 0	0 / 0	20 / 0
6	Kuwang	261	4 / 3	2 / 1	1 / 1	1 / 1	26 / 16	26 / 17
7	Kenthingnan	26	1 / 1	1 / 1	1 / 1	0 / 0	-	3 / 3
<b>TOTAL</b>		<b>2.613</b>	<b>26 / 15</b>	<b>7 / 3</b>	<b>7 / 3</b>	<b>3 / 2</b>	<b>75 / 46</b>	<b>128 / 20</b>

Size of Barn  
4 x 9 m<sup>2</sup>

Size of Fish  
Pond  
4 x 6 m<sup>2</sup>





# FIELD REVIEW



**Lahar Melimpas  
Jalan Raya Jogja/Magelang**  
Dusun Gempol, Ds. Jumoyo Kec. Salam,  
Kab. Magelang

Penyebab:  
Penyempitan sungai oleh adanya jembatan  
desa dan jembatan jalan raya

Solusi:  
Pelurusan sungai, Pengerukan, Tanggul

# Yogyakarta Shelter



## DI. YOGYAKARTA PROVINCE



**Refugees began to  
lived in shelter**



# Water Facilities

DI. YOGYAKARTA PROVINCE

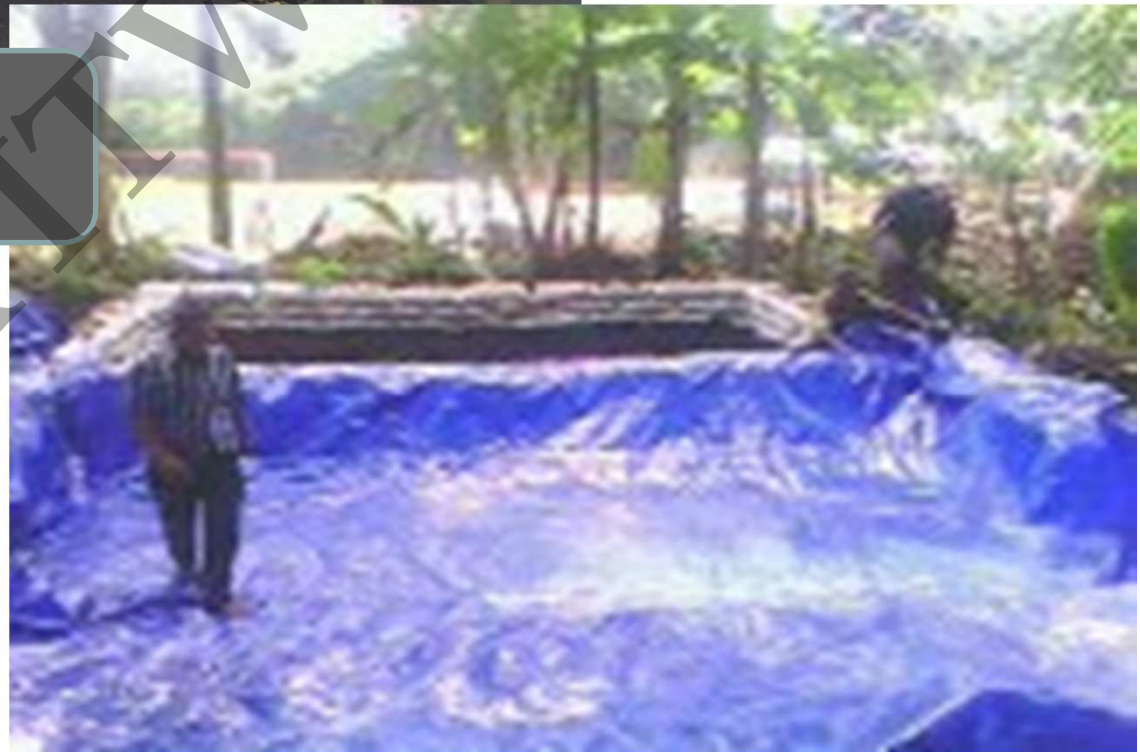


FOOT



**FACILITIES LIVESTOCK & FISH  
POND**

**PROVINCE DI. YOGYAKARTA**



# DISASTER MANAGEMENT IMPLEMENTATION

## *POST DISASTER*

### Rehabilitation

- Recovery of disaster area environmental
- Recovery of public facilities
- Giving community housing aids
- Recovery of psychosocial
- Medical Services
- Conflict reconciliation and resolution
- Recovery of social, economic and culture
- Recovery of security
- Recovery of Government services
- Recovery of public services

### Reconstruction

- redeveloped
  - facilitations
  - Social facilitations
  - Community socio-cultural
- Application of the right design planning
- Participation of the community, business institutions, and social organizations
- Improvement of social, economic and culture conditions
- Improvement of the public services
- Improvement of community main service



# ***Thanks For Your Attention***

**Taipei, 23-27 May 2011  
M.Darwis Sitinjak**

**BNPB CRICIS CENTER**

[posko@bnpb.go.id](mailto:posko@bnpb.go.id)

Telp. +62 21 3458400, Fax. +62 21 3458500