

*Governor's Office of Homeland Security & Emergency Preparedness
Federal Emergency Management Agency*

Hurricane
Response
Timeline

May 23, 2011

Agenda Agenda Agenda

- Opening Comments
- Timeline
- Decision Making
- Questions



Opening Comments

FOR EYES ONLY



H-Hour Timeline

FOIA ONLY

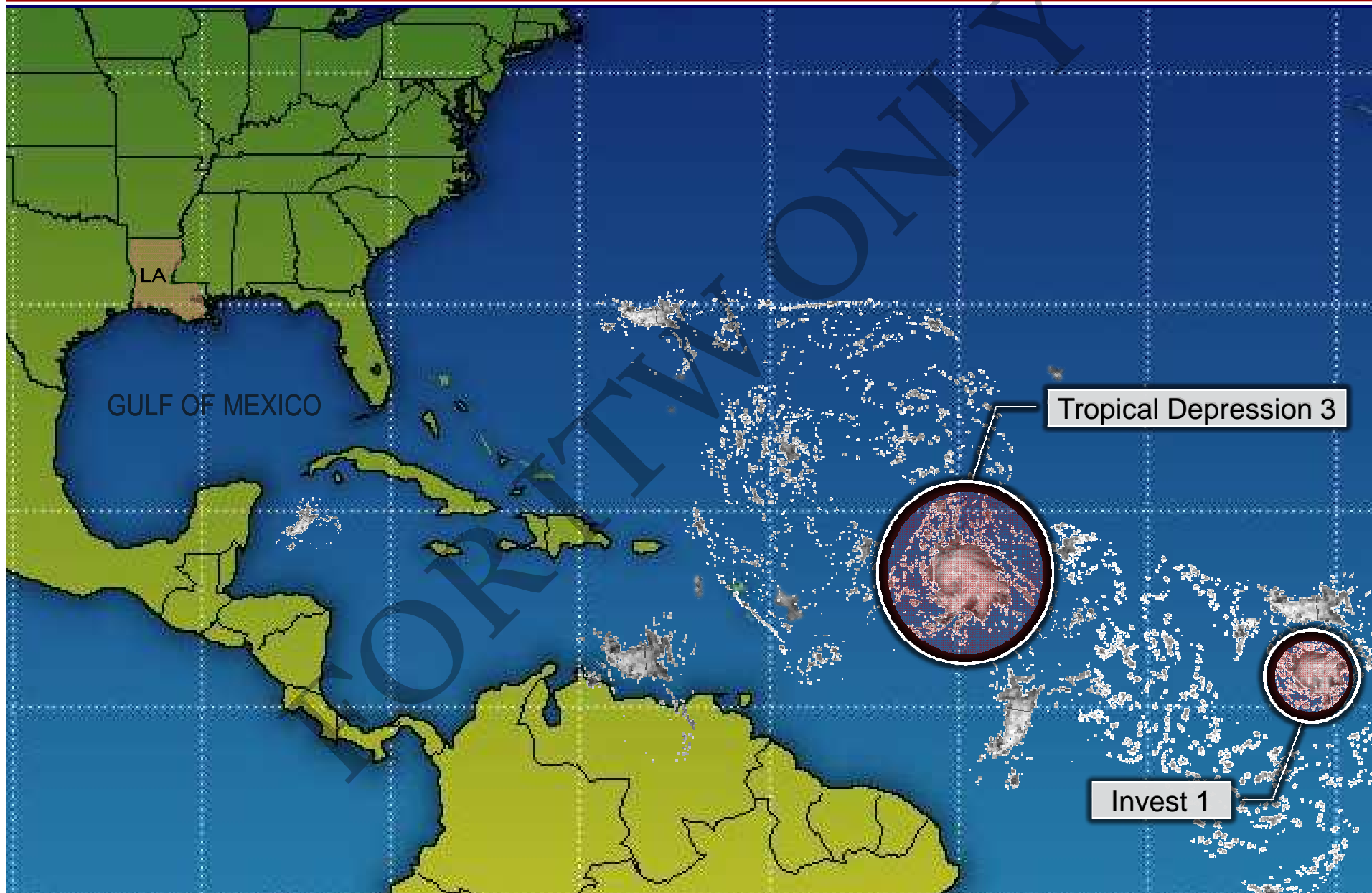
State H-Hour Definition

H-Hour Is Set As The Projected Onset
Of Tropical Force Winds Striking The
Coast Of Louisiana

The National Weather Service
Uses Landfall, Which Is The Eyewall
Of The Storm Making Landfall

Critical That We Are All On Same Timeline

Governor's Office of Homeland Security & Emergency Preparedness / FEMA
Hurricane Response Timeline



Governor's Office of Homeland Security & Emergency Preparedness / FEMA Hurricane Response Timeline

7



State Actions

H-120

- ✓ GOHSEP Crisis Action Team (CAT) activated - situation monitored
- ✓ Initiate State Unified Command conference call
- ✓ Prepare State Pre-Landfall Emergency Declaration

H-102

- ✓ State Declaration of Emergency is executed
- ✓ Develop & request Presidential Pre-landfall Emergency Declaration
- ✓ Activate contracts for commercial transportation for Assisted Transportation Plan
- ✓ Activate contracts for trucks - Pet Transportation Plan
- ✓ Activate Transportation Staging Areas



H-120

H-96

H-72

H-50

H-40

H-30

H-20

Landfall

..... Anticipated Storm Track

▭ Cone of Uncertainty

Scenario based on previous or likely storm tracks derived from Hurrevac

Governor's Office of Homeland Security & Emergency Preparedness / FEMA Hurricane Response Timeline

8

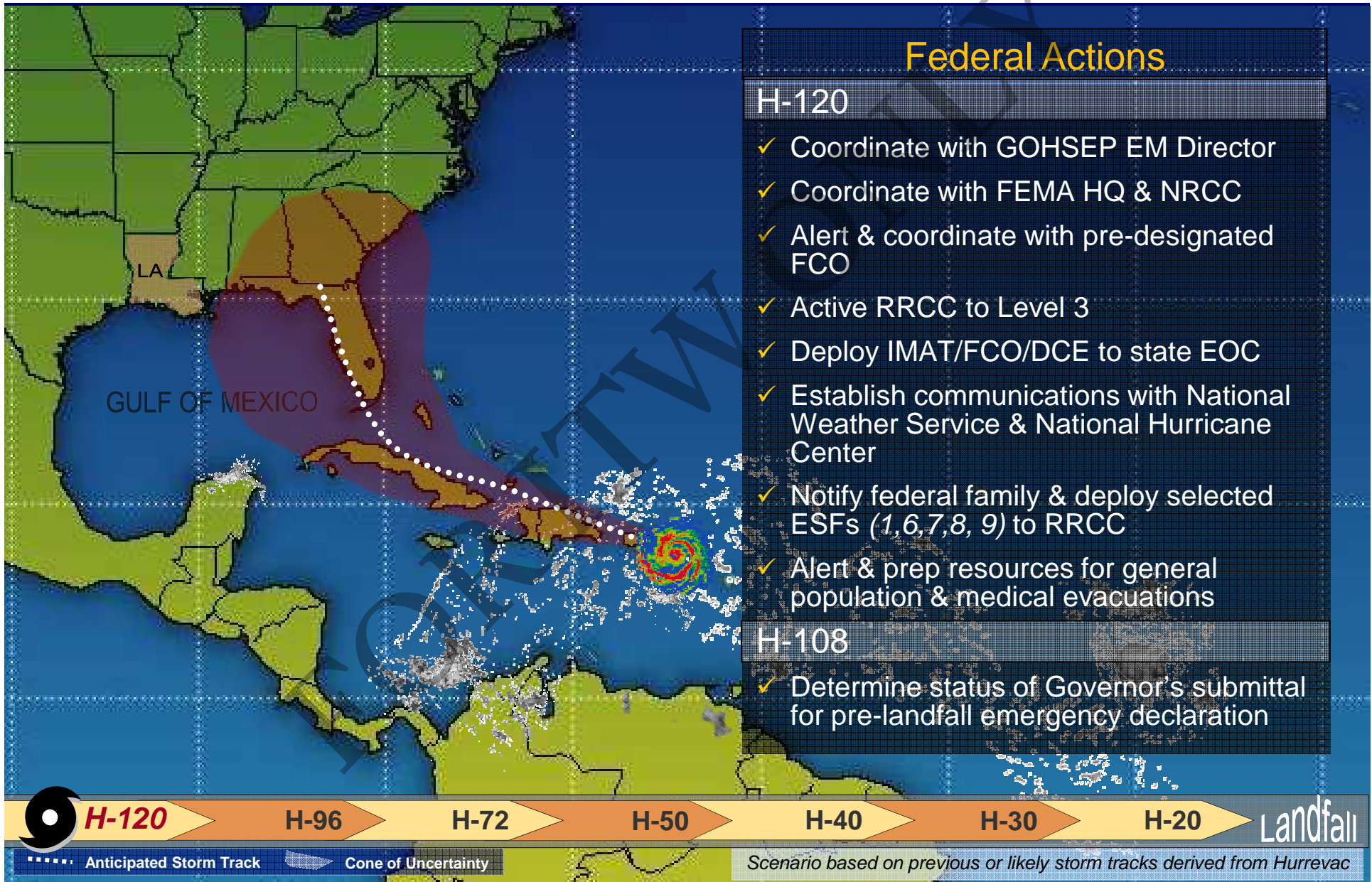
Federal Actions

H-120

- ✓ Coordinate with GOHSEP EM Director
- ✓ Coordinate with FEMA HQ & NRCC
- ✓ Alert & coordinate with pre-designated FCO
- ✓ Active RRCC to Level 3
- ✓ Deploy IMAT/FCO/DCE to state EOC
- ✓ Establish communications with National Weather Service & National Hurricane Center
- ✓ Notify federal family & deploy selected ESFs (1,6,7,8, 9) to RRCC
- ✓ Alert & prep resources for general population & medical evacuations

H-108

- ✓ Determine status of Governor's submittal for pre-landfall emergency declaration



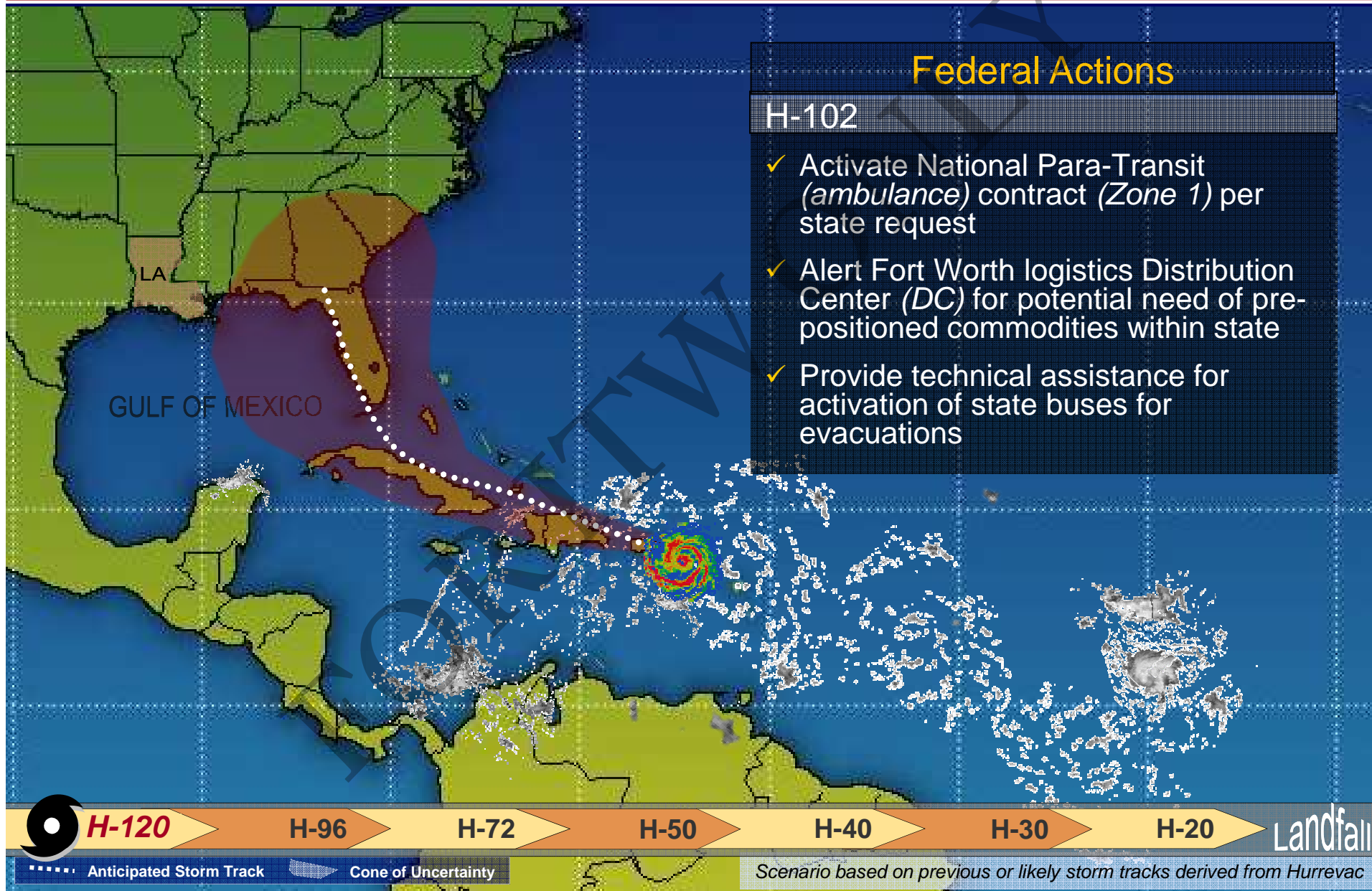
Governor's Office of Homeland Security & Emergency Preparedness / FEMA Hurricane Response Timeline

9

Federal Actions

H-102

- ✓ Activate National Para-Transit (*ambulance*) contract (*Zone 1*) per state request
- ✓ Alert Fort Worth logistics Distribution Center (*DC*) for potential need of pre-positioned commodities within state
- ✓ Provide technical assistance for activation of state buses for evacuations



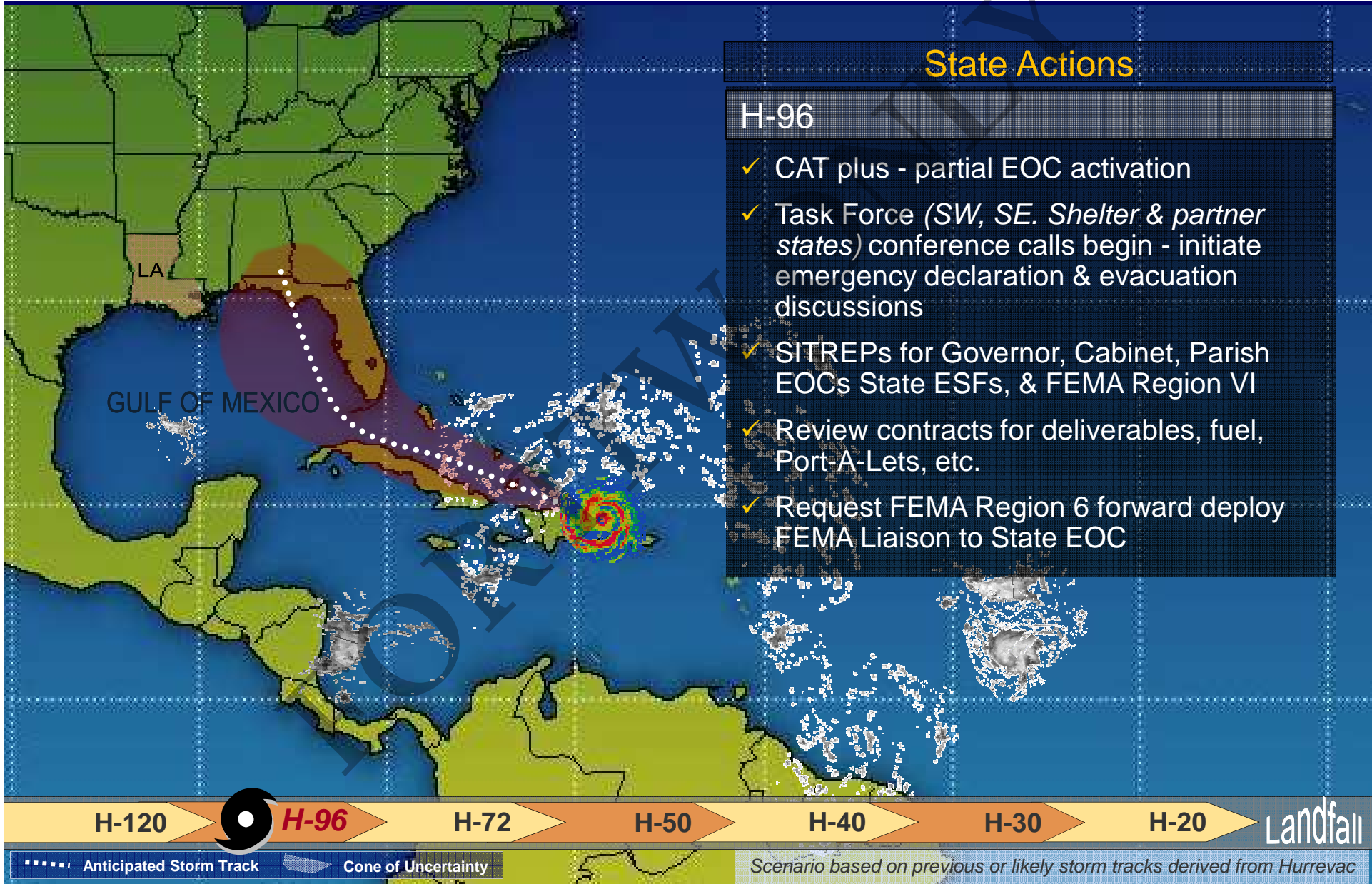
Governor's Office of Homeland Security & Emergency Preparedness / FEMA Hurricane Response Timeline

10

State Actions

H-96

- ✓ CAT plus - partial EOC activation
- ✓ Task Force (SW, SE. Shelter & partner states) conference calls begin - initiate emergency declaration & evacuation discussions
- ✓ SITREPs for Governor, Cabinet, Parish EOCs State ESFs, & FEMA Region VI
- ✓ Review contracts for deliverables, fuel, Port-A-Lets, etc.
- ✓ Request FEMA Region 6 forward deploy FEMA Liaison to State EOC



Governor's Office of Homeland Security & Emergency Preparedness / FEMA Hurricane Response Timeline

11

State Actions

H-96

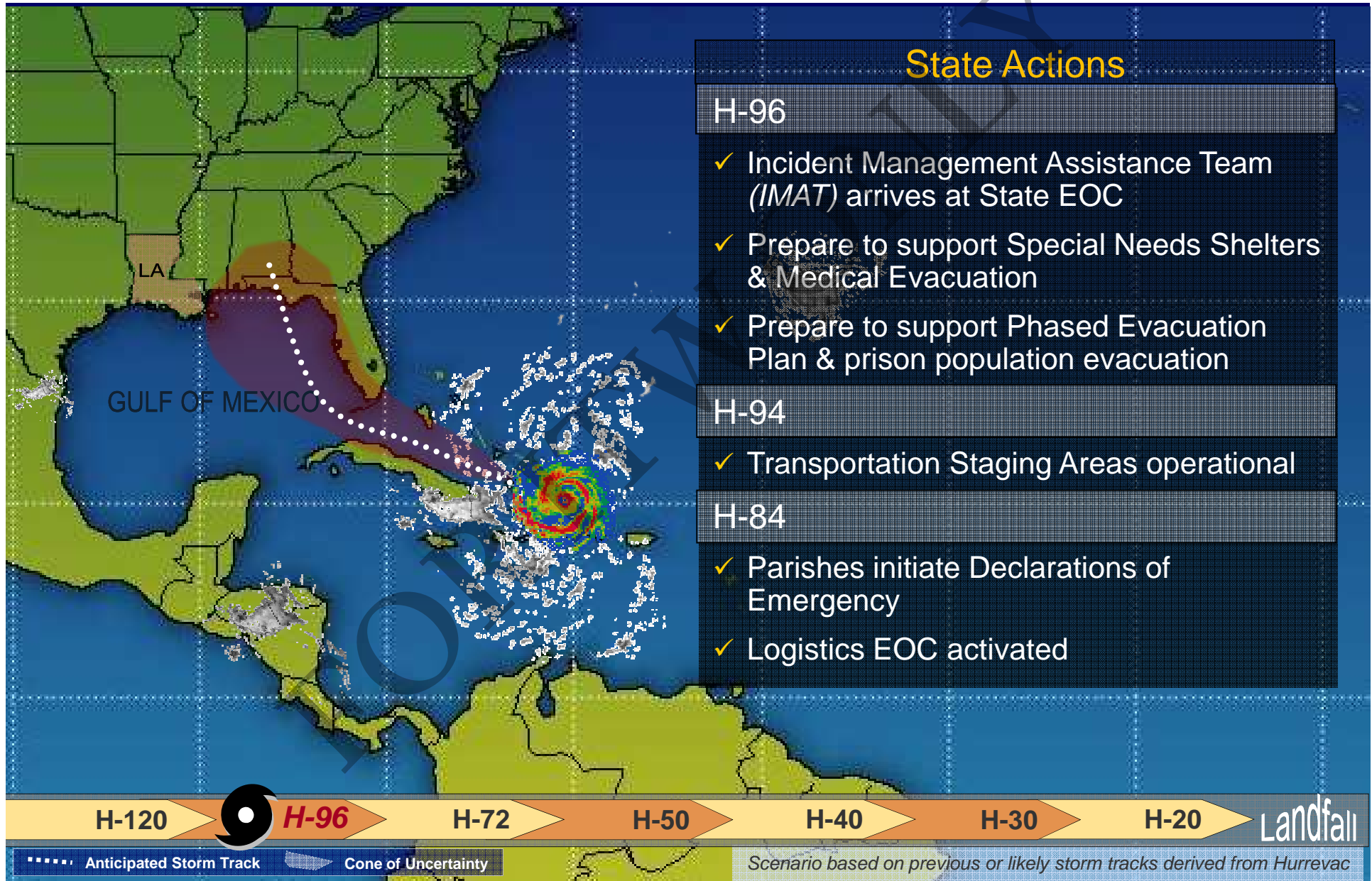
- ✓ Incident Management Assistance Team (IMAT) arrives at State EOC
- ✓ Prepare to support Special Needs Shelters & Medical Evacuation
- ✓ Prepare to support Phased Evacuation Plan & prison population evacuation

H-94

- ✓ Transportation Staging Areas operational

H-84

- ✓ Parishes initiate Declarations of Emergency
- ✓ Logistics EOC activated



H-120

H-96

H-72

H-50

H-40

H-30

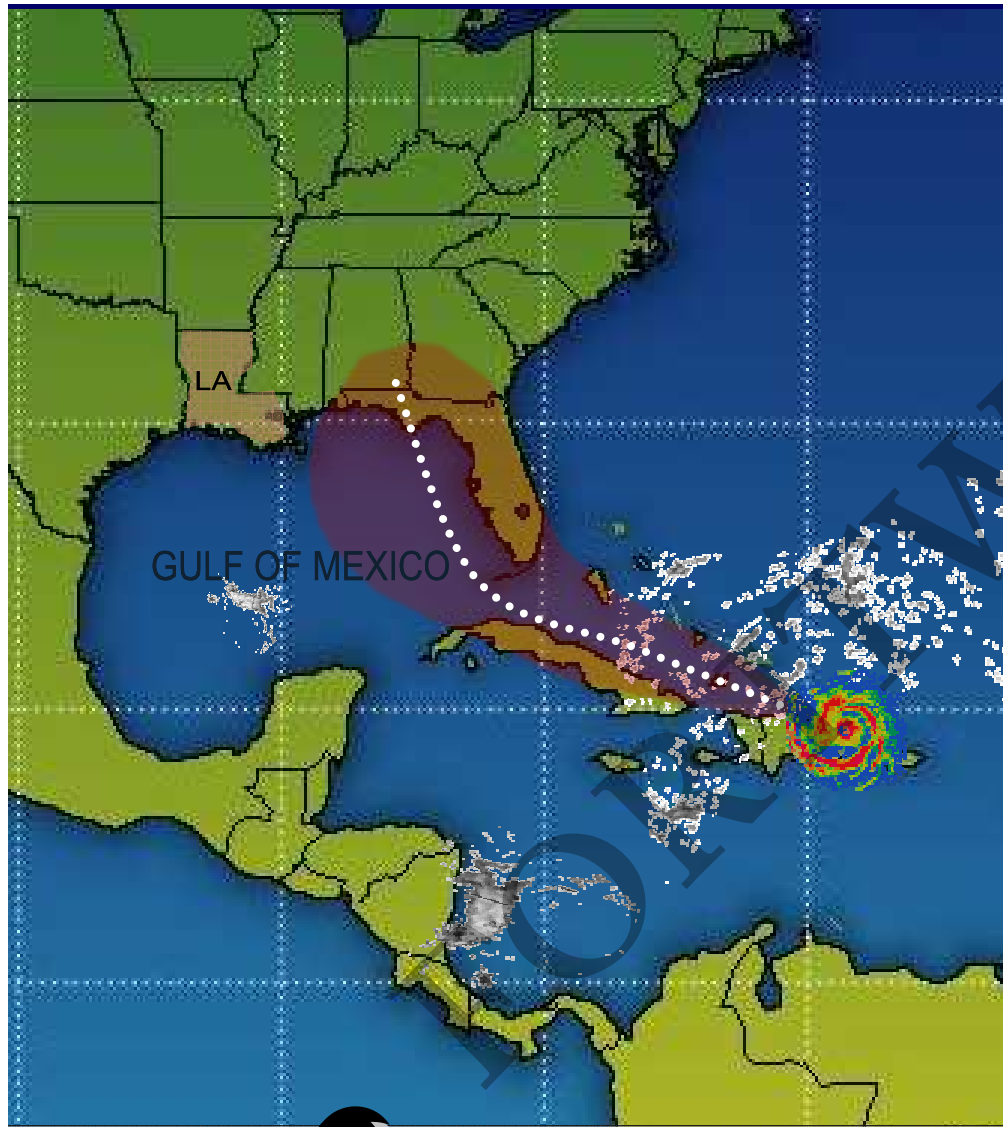
H-20

Landfall

..... Anticipated Storm Track

▭ Cone of Uncertainty

Scenario based on previous or likely storm tracks derived from Hurrevac



Federal Actions

H-96

- ✓ Alert FEMA Regions with Host-State sheltering agreements of potential evacuations
- ✓ IMAT/FCO/DCE operational at state EOC & IOF
- ✓ MERS deploys to state EOC & IOF
- ✓ Deploy logistics teams to establish Federal Staging Area(s)
- ✓ Pre-stage commodities & equipment for general population & medical evacuations
- ✓ Activate & deploy advance elements of New Orleans Airport (MSY) Incident Command Post Support Staff (TSA, FAMS)

H-120

H-96

H-72

H-50

H-40

H-30

H-20

Landfall

..... Anticipated Storm Track

Cone of Uncertainty

Scenario based on previous or likely storm tracks derived from Hurrevac

Governor's Office of Homeland Security & Emergency Preparedness / FEMA Hurricane Response Timeline

13

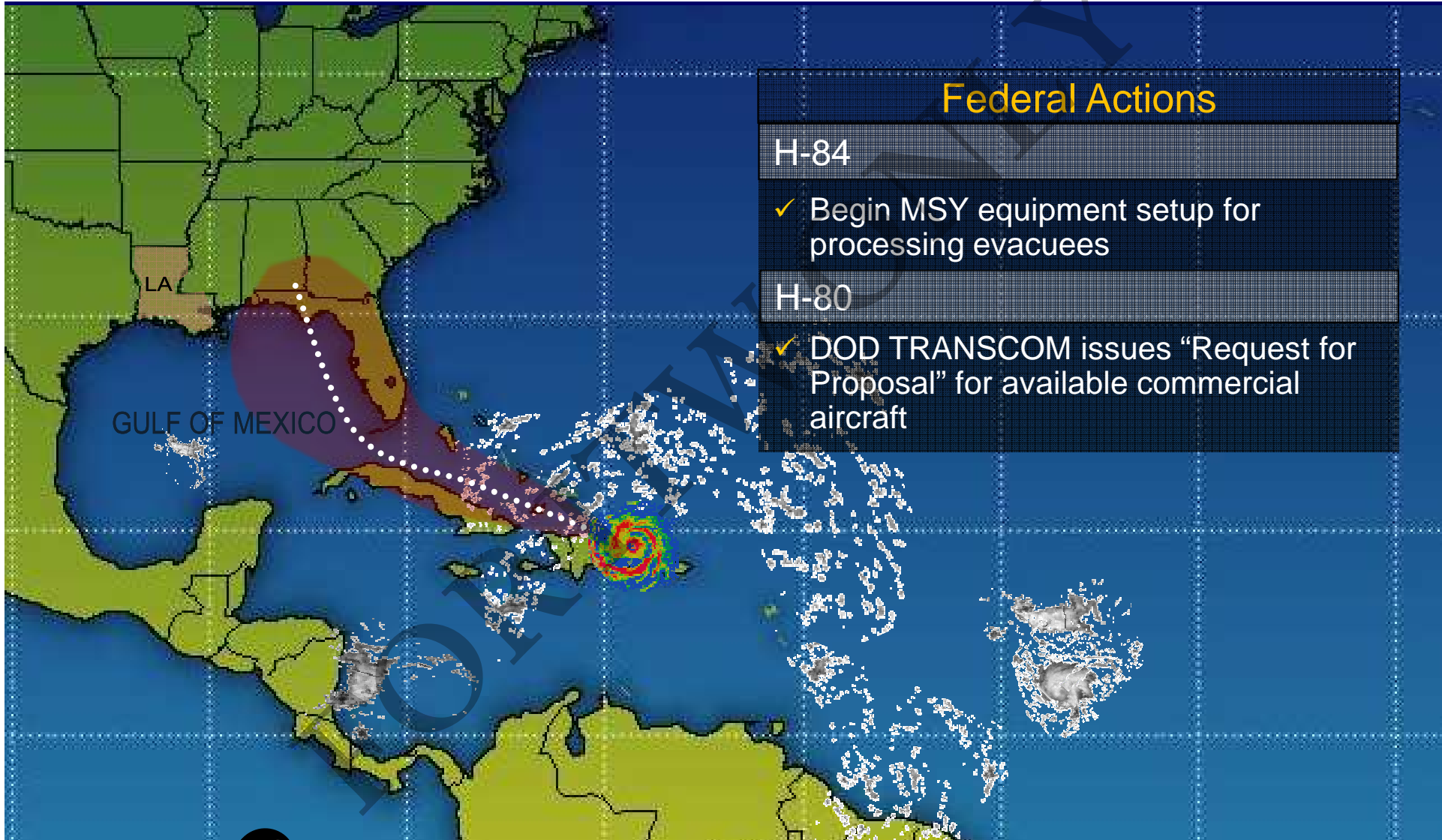
Federal Actions

H-84

- ✓ Begin MSY equipment setup for processing evacuees

H-80

- ✓ DOD TRANSCOM issues "Request for Proposal" for available commercial aircraft



H-120

H-96

H-72

H-50

H-40

H-30

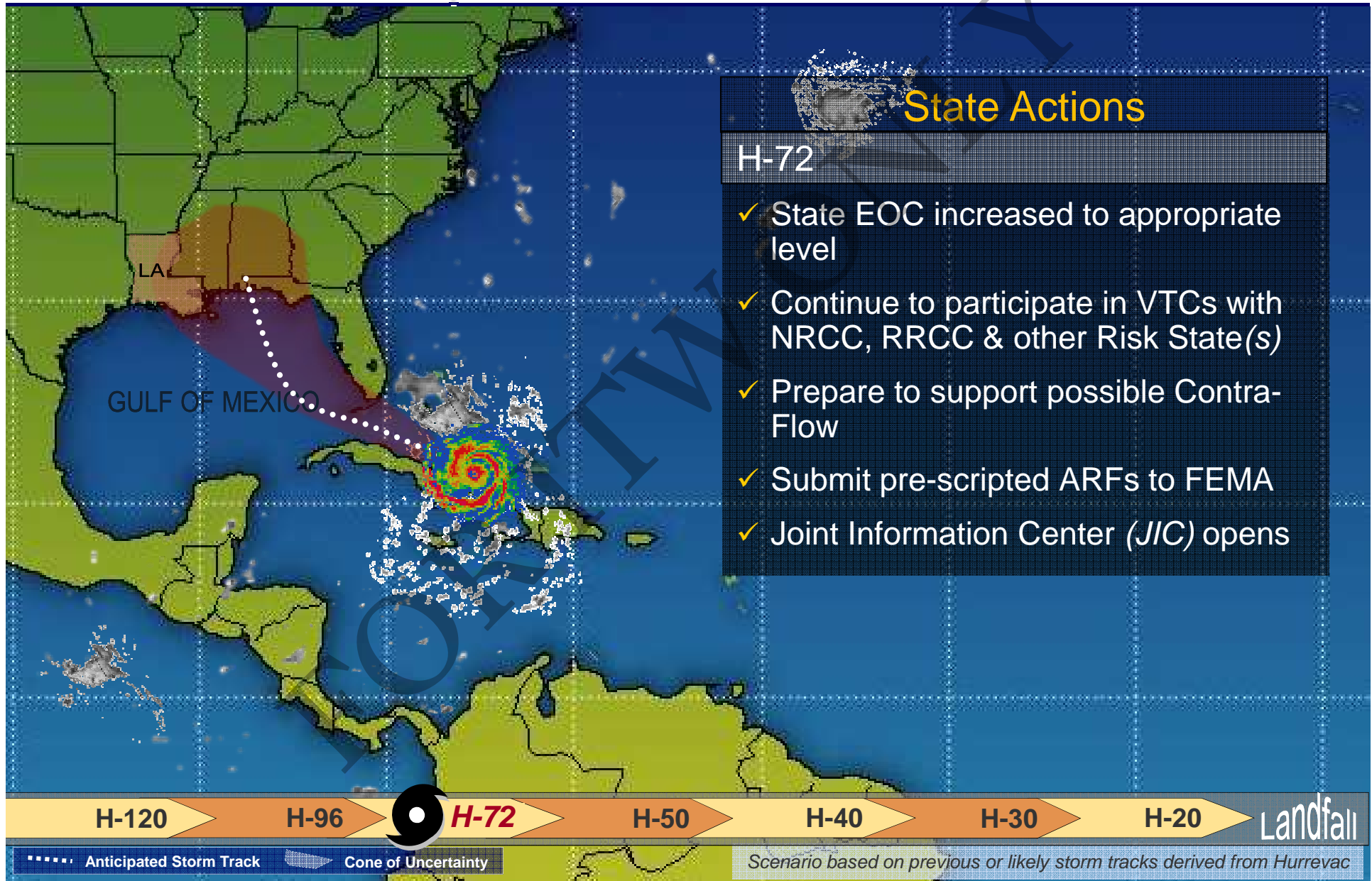
H-20

Landfall

..... Anticipated Storm Track

Cone of Uncertainty

Scenario based on previous or likely storm tracks derived from Hurrevac



State Actions

H-72

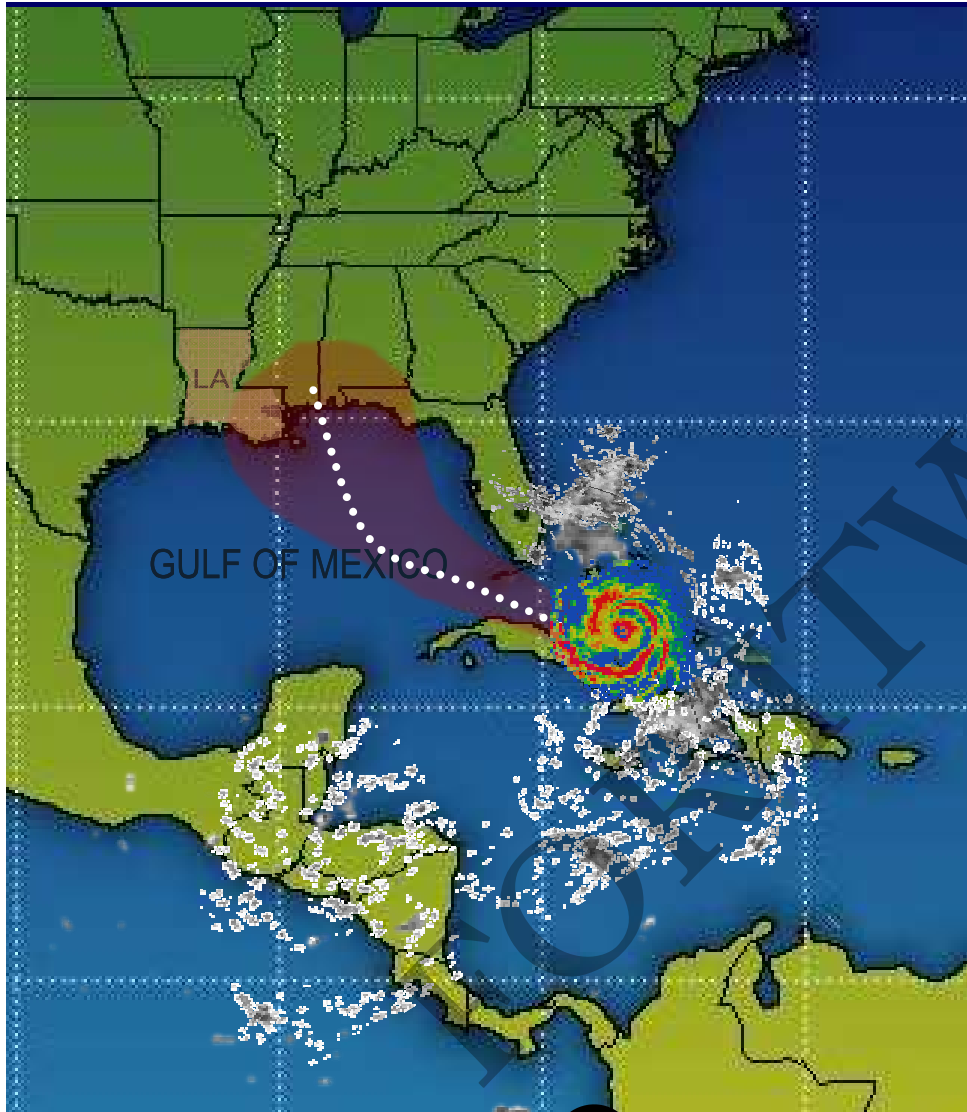
- ✓ Initiate setup of Special Needs Shelters
- ✓ Initiate dissemination of public information on early evacuation & shelter operations
- ✓ Initiate prison population evacuations
- ✓ Establish Regional Staging Area (RSA) operations

H-66

- ✓ Request 300 school buses *(if required)*

H-54

- ✓ Assisted evacuation begins



H-120

H-96

H-72

H-50

H-40

H-30

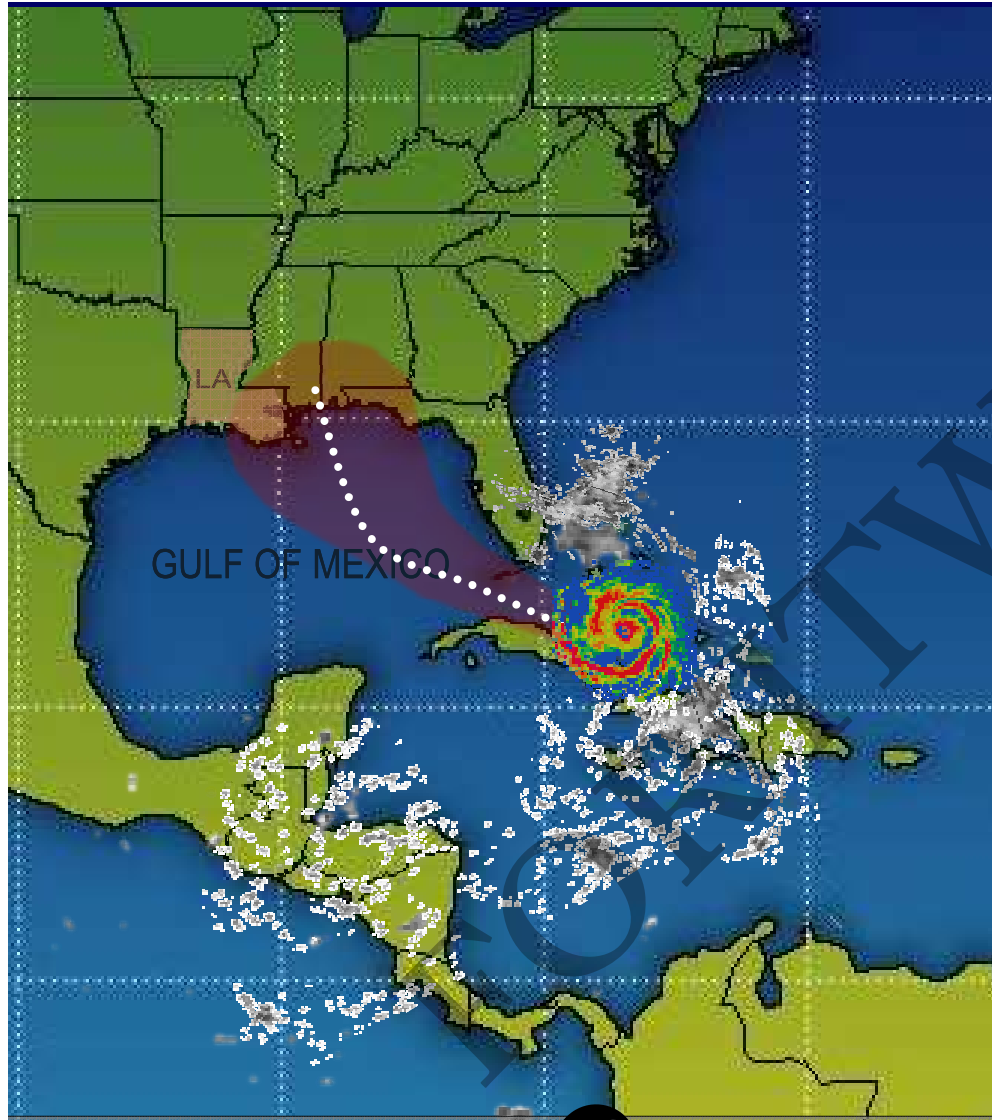
H-20

Landfall

..... Anticipated Storm Track

☐ Cone of Uncertainty

Scenario based on previous or likely storm tracks derived from Hurrevac



Federal Actions

H-74

- ✓ Medical evacuation conference call with HHS, FEMA, VA & DOD
- ✓ Ambulance (HQ) initial response team & Sherwood Forrest staging area operational
- ✓ MSY incident command post operational

H-72

- ✓ Continue daily VTCs with NRCC, NHC & risk state(s)
- ✓ NRCC at increased level
- ✓ RRCC to Level 2 or 1 based on threat
- ✓ TSA screening facility at MSY operational
- ✓ Mobile Command Center arrives at MSY West Ramp & Mini Mobile Command Center arrives at state EOC for communications capabilities
- ✓ DOD Medevac Forces in Place

H-120

H-96

H-72

H-50

H-40

H-30

H-20

Landfall

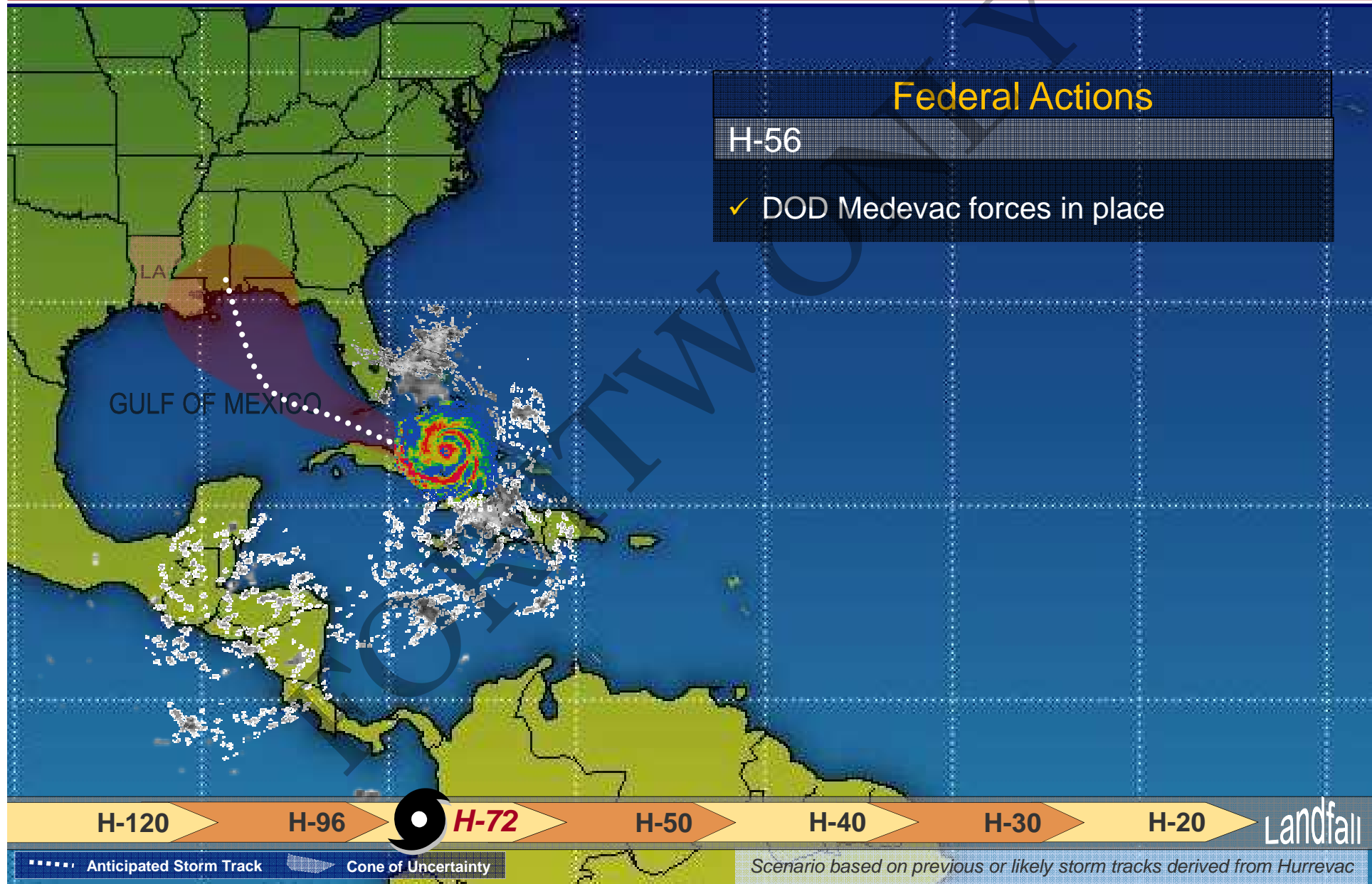
..... Anticipated Storm Track

▬ Cone of Uncertainty

Scenario based on previous or likely storm tracks derived from Hurrevac

Governor's Office of Homeland Security & Emergency Preparedness / FEMA Hurricane Response Timeline

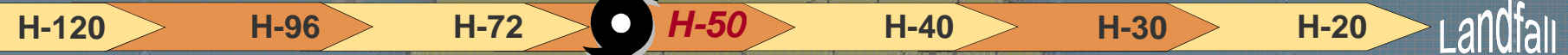
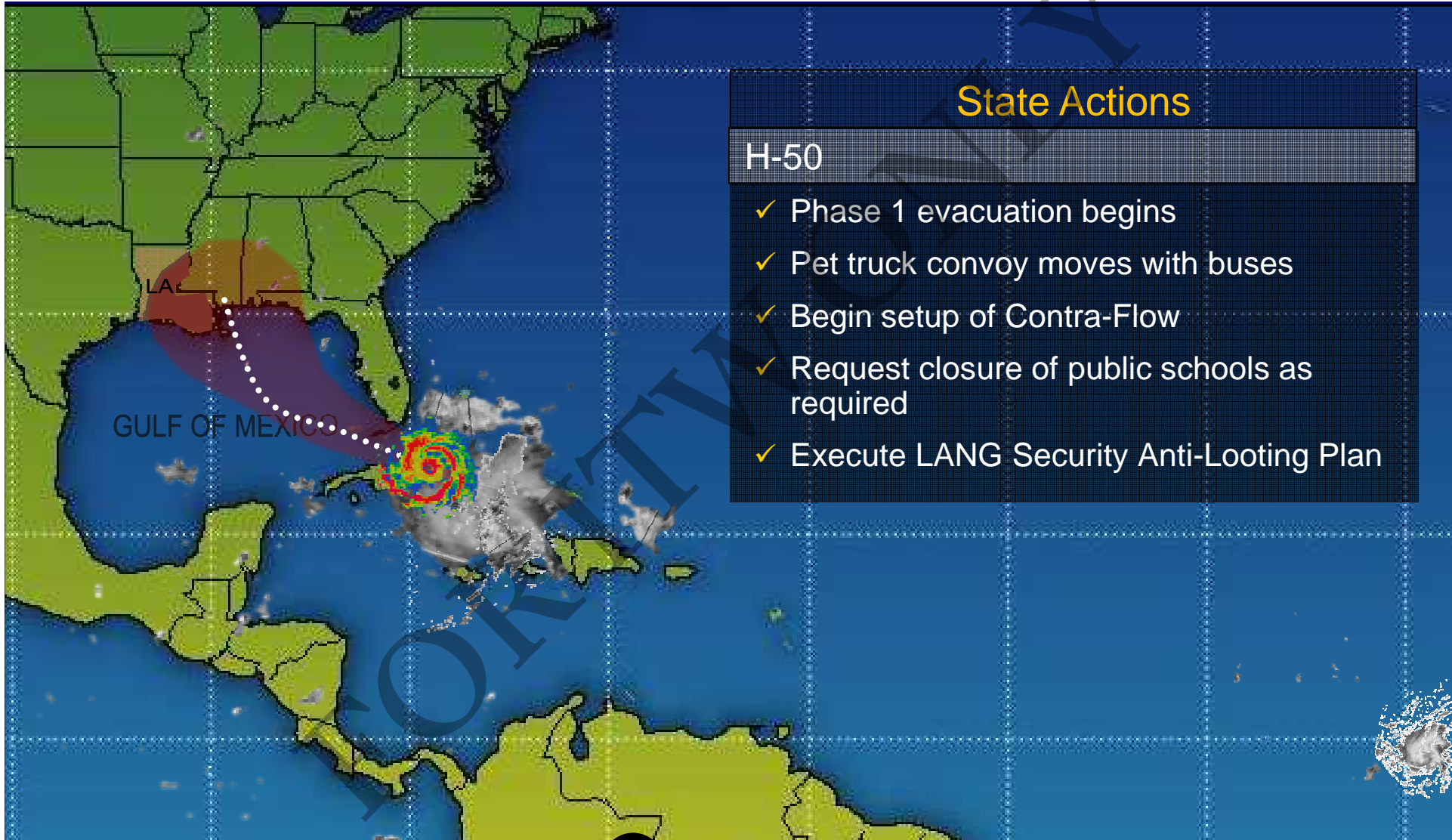
17



State Actions

H-50

- ✓ Phase 1 evacuation begins
- ✓ Pet truck convoy moves with buses
- ✓ Begin setup of Contra-Flow
- ✓ Request closure of public schools as required
- ✓ Execute LANG Security Anti-Looting Plan



..... Anticipated Storm Track
Cone of Uncertainty

Scenario based on previous or likely storm tracks derived from Hurrevac



Federal Actions

H-50

- ✓ 1st DOD (C130/C17) aero-medical evacuation aircraft arrives at marshalling points
- ✓ 1st DOD gen pop aircraft (*military & commercial*) arrives at MSY
- ✓ FEMA division supervisors arrive at IOF

H-48

- ✓ Aircraft depart for Federal Coordinating Center designated triage airfield
- ✓ Gen pop aircraft depart for host-state airport(s)
- ✓ Pallets of water & meals arrive at Sherwood Forest - contingency stock
- ✓ Army Corps of Engineers deploy generator planning response teams

H-120

H-96

H-72

H-50

H-40

H-30

H-20

Landfall

..... Anticipated Storm Track

 Cone of Uncertainty

Scenario based on previous or likely storm tracks derived from Hurrevac

Governor's Office of Homeland Security & Emergency Preparedness / FEMA Hurricane Response Timeline

20

State Actions

H-40

- ✓ Begin evacuation of the Phase II area
- ✓ Begin movement of commodities forward

H-120

H-96

H-72

H-50

H-40

H-30

H-20

Landfall

..... Anticipated Storm Track

Cone of Uncertainty

Scenario based on previous or likely storm tracks derived from Hurrevac

Governor's Office of Homeland Security & Emergency Preparedness / FEMA Hurricane Response Timeline

21

State Actions

H-30

- ✓ Begin evacuation of Phase III areas
- ✓ Support Phase III Contra-Flow as required

H-120

H-96

H-72

H-50

H-40

H-30

H-20

Landfall

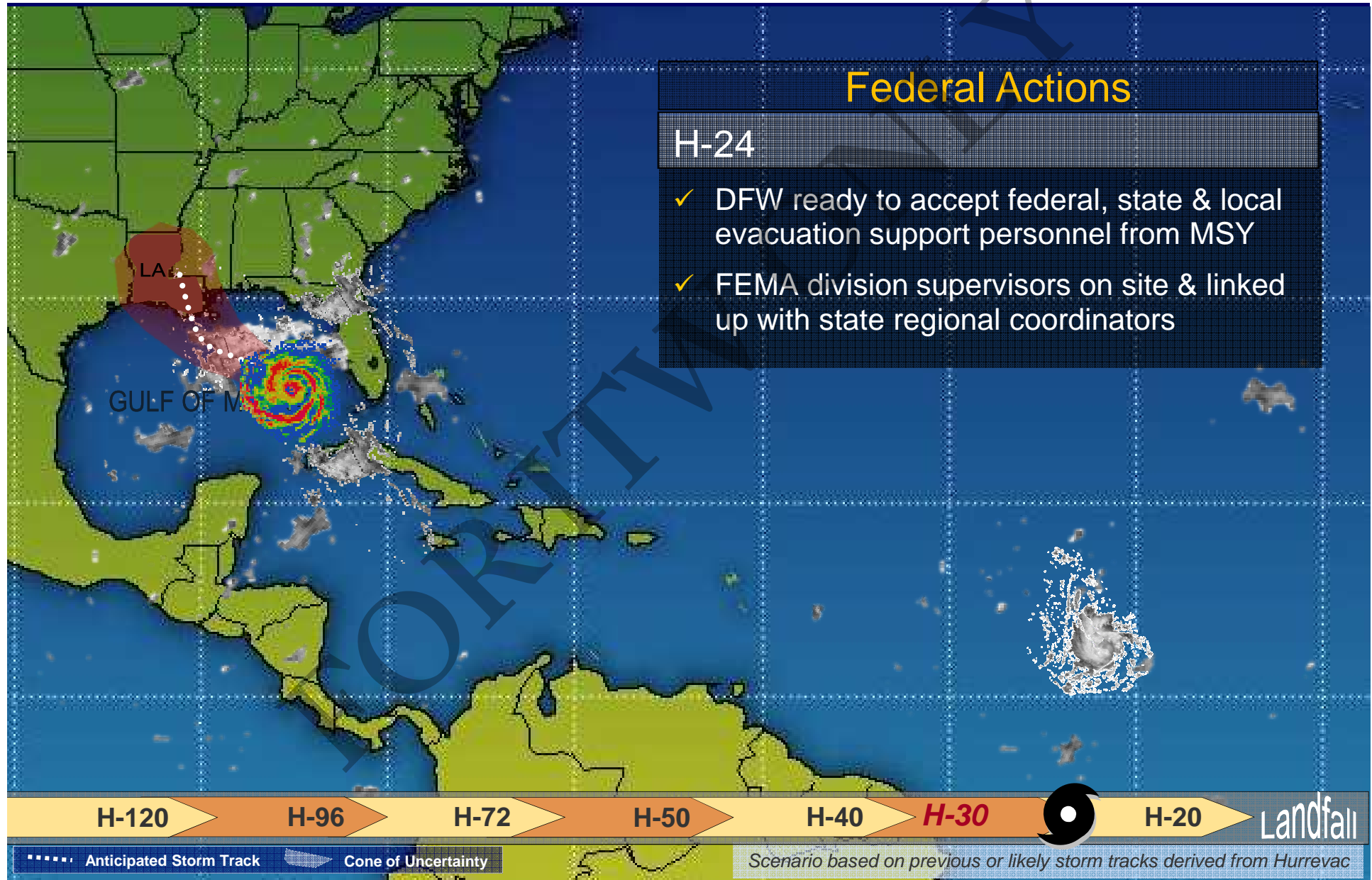
..... Anticipated Storm Track

Cone of Uncertainty

Scenario based on previous or likely storm tracks derived from Hurrevac

Governor's Office of Homeland Security & Emergency Preparedness / FEMA Hurricane Response Timeline

22



State Actions

H-20

- ✓ State Assisted Evacuation completed
- ✓ Registration/tracking/reporting of those evacuated
- ✓ Prepare for re-entry
- ✓ Prepare for post storm damage assessment
- ✓ EAS messages & public information continues

H-12

- ✓ Maintain communications & situational awareness with parishes

H+

- ✓ SMART SAR operations begin



H-120

H-96

H-72

H-50

H-40

H-30

H-20

Landfall

..... Anticipated Storm Track

Cone of Uncertainty

Scenario based on previous or likely storm tracks derived from Hurrevac



Federal Actions

H-18

- ✓ Gen pop & medical air evacuation ends
- ✓ MSY support personnel evacuate to DFW

H-12

- ✓ Medical support personnel demobilize & evacuate to pre-designated or announced Safe Haven site
- ✓ MSY air evacuation operations complete, MSY shuts down

H-8

- ✓ Verify all federal responders are safe & accounted for

H-120

H-96

H-72

H-50

H-40

H-30

H-20

Landfall

..... Anticipated Storm Track

Cone of Uncertainty

Scenario based on previous or likely storm tracks derived from Hurrevac



Decision Making

FOR EYES ONLY

Information Requirements

- Considerations
 - Size & speed of storm
 - Anticipated/what-if storm tracks
 - Timing considerations
 - Storm surge
 - Associated weather events

Information Requirements

- Information dissemination
 - Audio/video conference calls
 - Webinars
 - Local briefings



GUSTAV # 32 NHC Past(solid) and Forecast(dots) Track

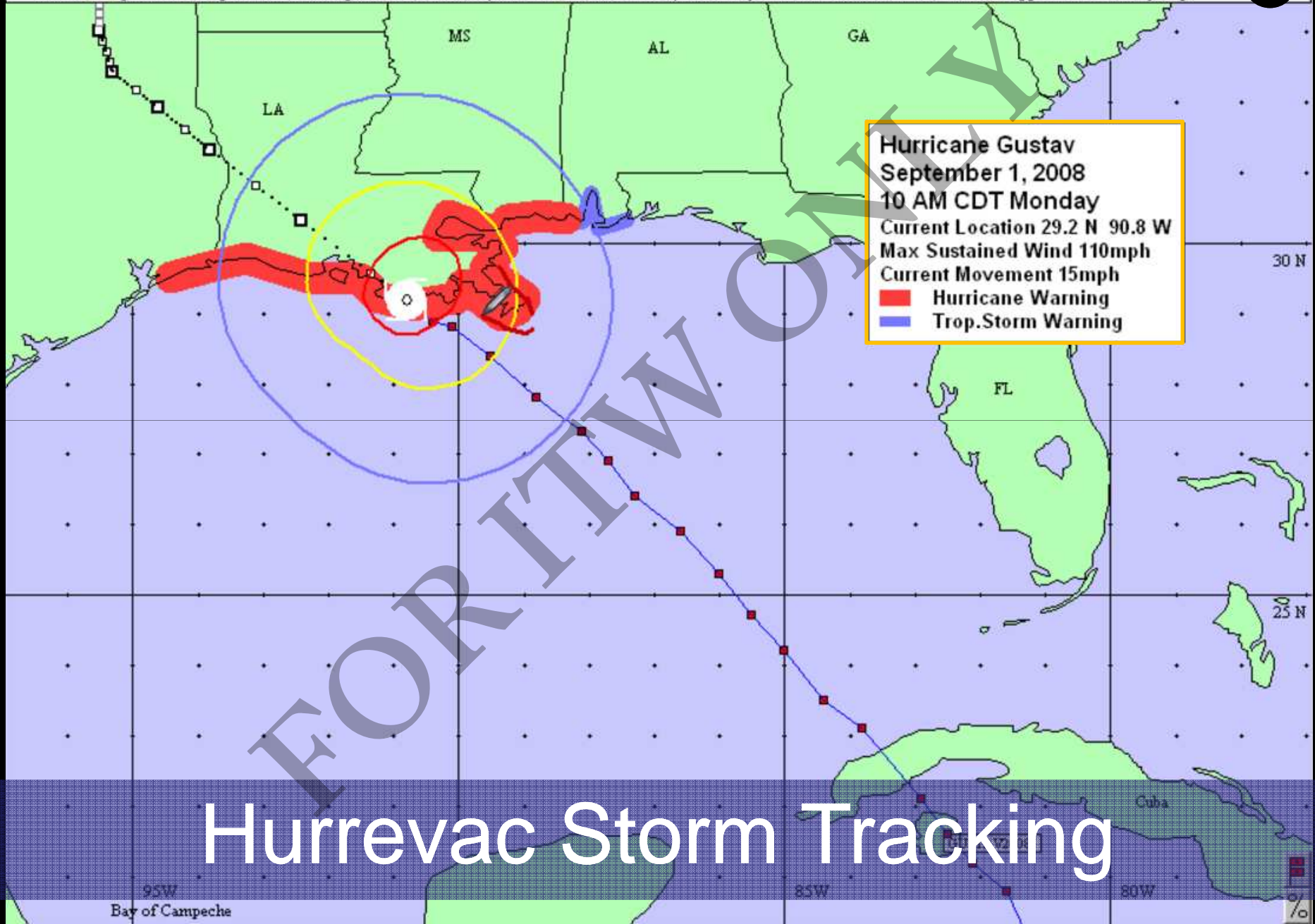
■ >34Kt(39mph)

■ >50Kt(58mph)

■ >64kt(74mph)

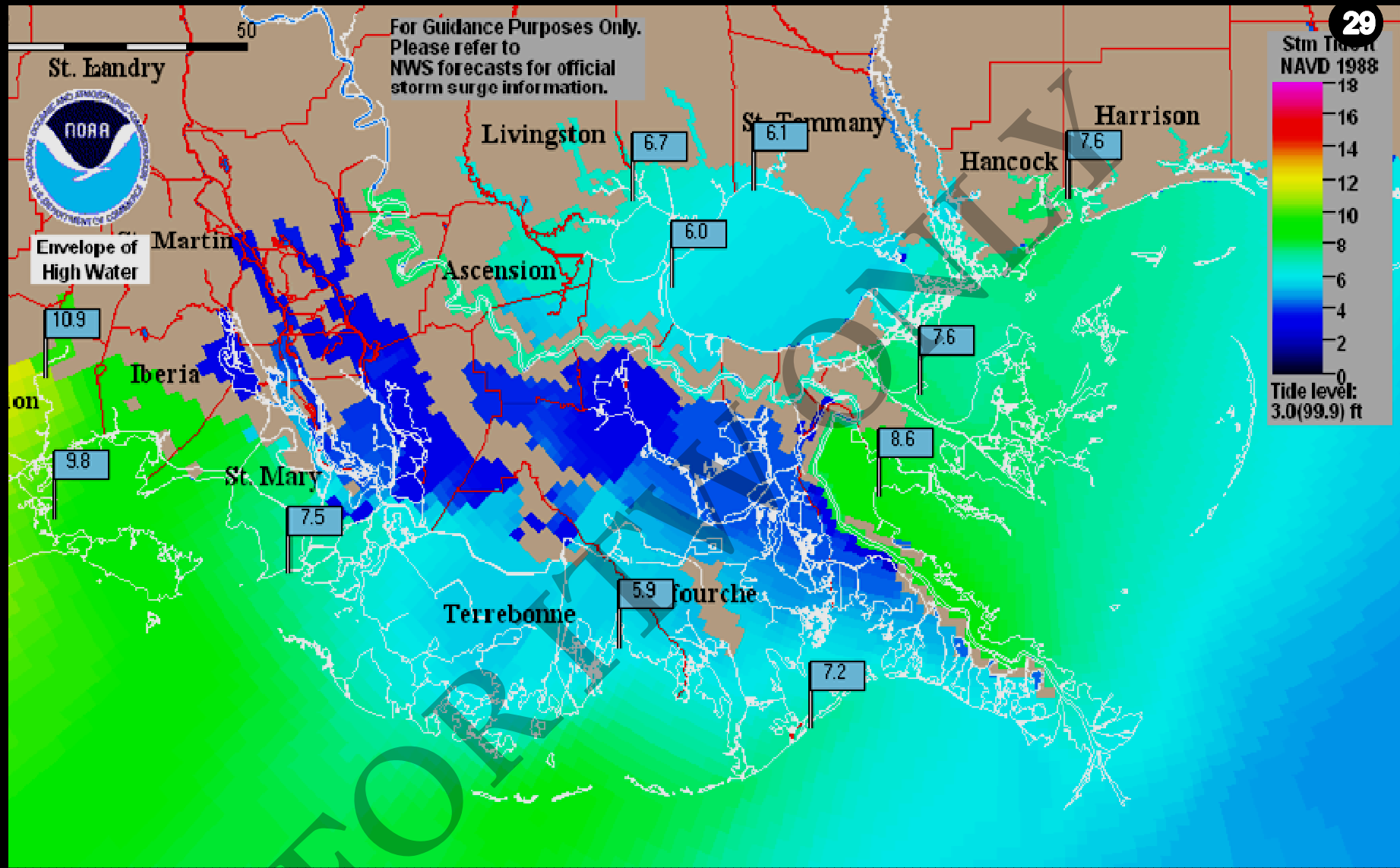
National Hurricane Center Disclaimer: 'Wind Range Contours show the maximum extent of winds expected in each quadrant. Users are cautioned that winds vary greatly within each quadrant. For quadrants extending over land and water, over-water values are used, which may make the extent of inland wind radii appear unrealistically large'

28



Hurricane Gustav
September 1, 2008
10 AM CDT Monday
Current Location 29.2 N 90.8 W
Max Sustained Wind 110mph
Current Movement 15mph
■ Hurricane Warning
■ Trop. Storm Warning

Hurrevac Storm Tracking

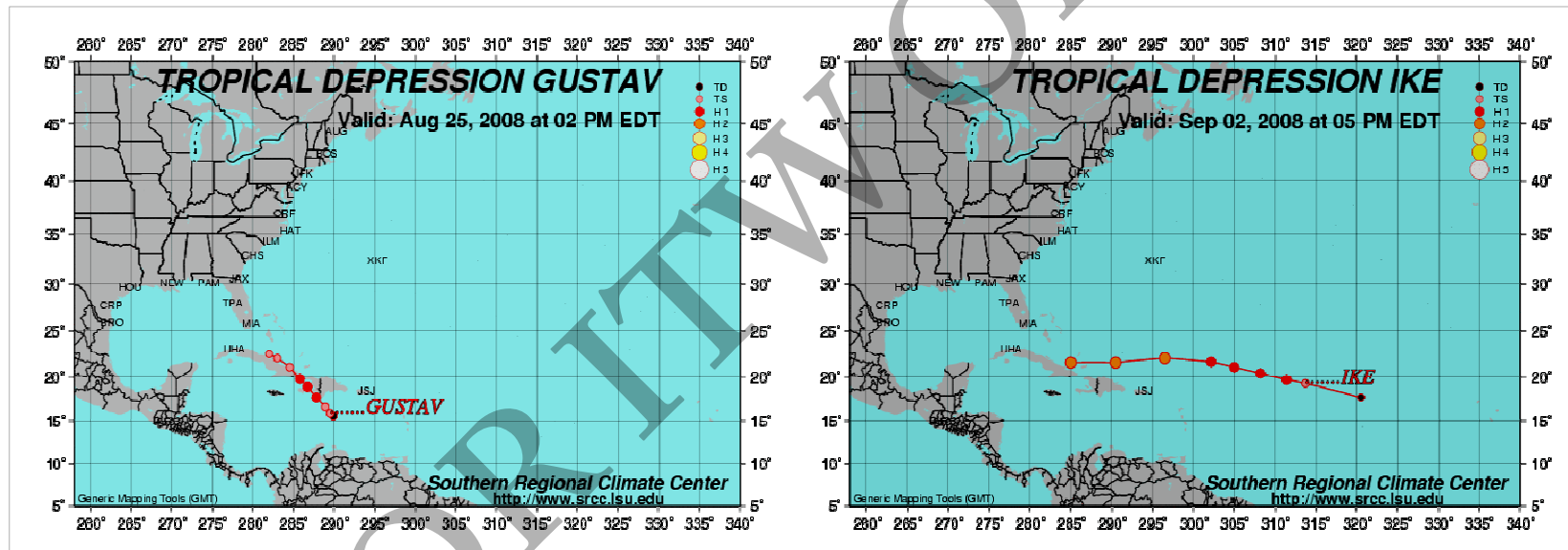


Storm Surge Modeling



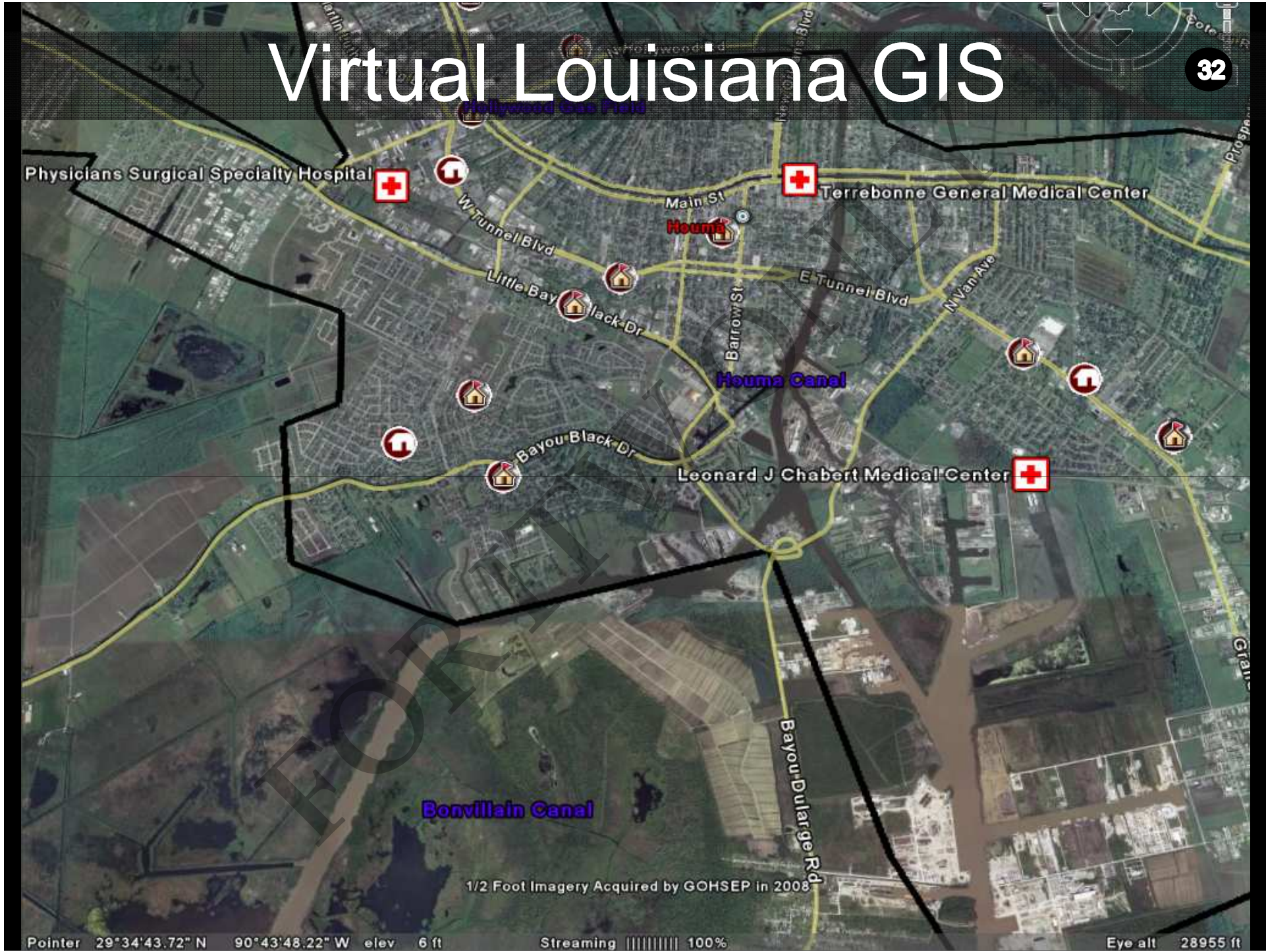
Key Storm Resources

Southern Regional Climate Center Louisiana State University



- Storm Tracking
- Climatological Interpretation
- Satellite Imagery
- Surge Modeling

Virtual Louisiana GIS



1/2 Foot Imagery Acquired by GOHSEP in 2008



Questions

FOR REVIEW ONLY



Governor's Office



FEMA